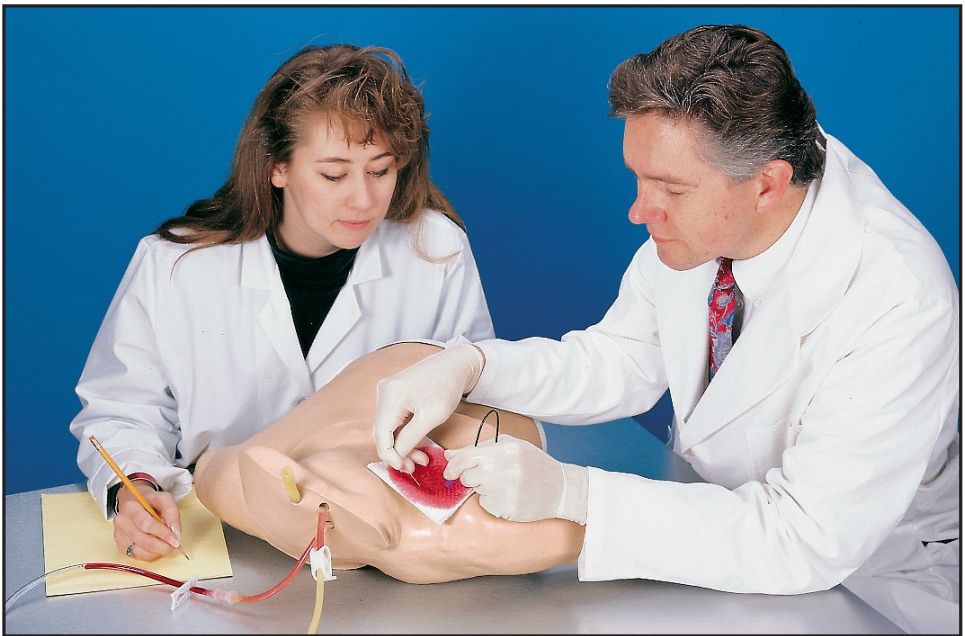


Dedicated to Delivery
Nasco
Life/form®

3 Life/form.
Year
Warranty
Simulators
& Trainers

Heart Catheterization Simulator LF01012U Instruction Manual



**CAUTION: PRODUCT CONTAINS DRY NATURAL RUBBER.
DO NOT REMOVE FILM FROM TUBING!**

Life/form® Products by Nasco

About the Simulator

The **Life/form®** Heart Catheterization Simulator is the ideal way to train staff in the techniques of central venous catheterization without patient risk.

Venous catheterization and the use of a Swan–Ganz catheter can be practiced at all common sites of the upper torso (subclavian, jugular, and peripheral).

Preparation of the puncture sites and bandaging techniques may also be practiced with no fear of infection or harm to a patient.

Note: Some compromise in the position of the arm was necessary in the simulator to allow both peripheral and central catheterization. The right arm is slightly abducted, and the forearm is pronated. It is not necessarily the usual position for this procedure.

List of Components

- Replaceable Skin
- Vein Tubing Sealant Kit
- Needles
- **Life/form®** Venous Blood (1qt.)

Set Up Procedure

A. Prepare Synthetic Blood

Concentrated blood colorant is provided. Dilute the concentrate by filling the container with water.

B. Fill Supply Bag

Pour the colorant into the supply bag. Be certain the pinch clamp on the supply line is closed.

C. Connect to Simulator

Attach the connector on the end of the supply line to the matching connector on the simulator.

D. Fill System

Open the two pinch clamps on the simulator. Allow the system to be filled by opening the clamp on the supply line. Once the system is full, close both pinch clamps on the simulator. **DO NOT** close the pinch clamp on the supply line.

E. The simulator is now ready for use.

Skin and Tubing Replacement

Note how the tubing is laid out in the simulator while removing. This will make reassembling with new tubing easier.

- A. Remove clamps, connector, and shoestring.
- B. Lubricate exterior of outer skin with **Life/form®** Lubricant Kit (LF00985U).

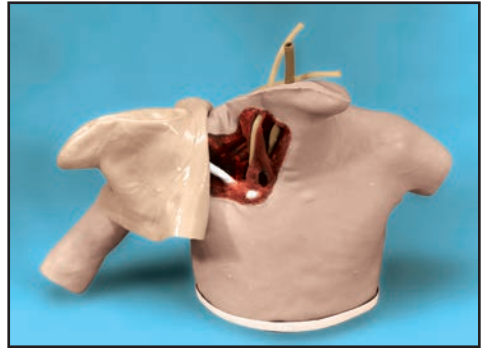


Figure 1

- C. Starting at the left shoulder, turn the skin inside out over the neck and chin area. (**See figure 1.**)
- D. Continue turning skin inside out down the entire length of the arm.
- E. Remove the white cover at the base of the simulator.

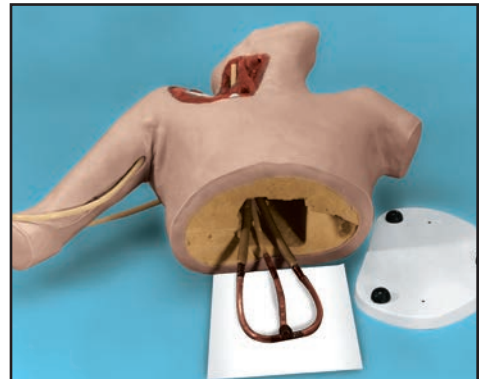


Figure 2

- F. Pull the damaged tubes out the base of the simulator. (**See figure 2.**)

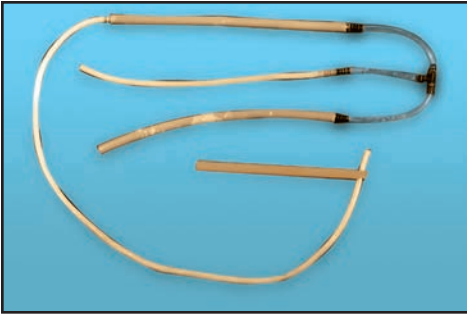


Figure 3

- G. Lubricate the new tubing with **Life/form®** Lubricant Kit. (See **figure 3.**) **DO NOT REMOVE FILM FROM TUBING.** The new tubing can be inserted into the dissected area of the shoulder by attaching it to the wooden dowel. (See **figure 4.**)

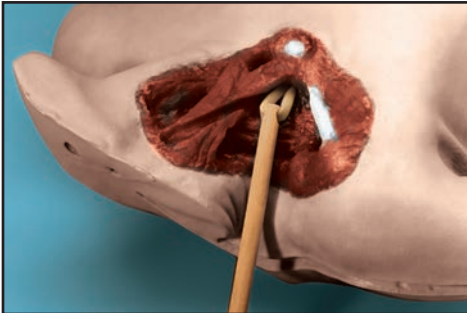


Figure 4

- H. Position tubing in vein channels.
 I. Lubricate the inside of new skin with **Life/form®** Lubricant Kit (LF00985U).
 J. Slide new skin onto body.
 K. Connect clamps, connector, shoestring, and cover.
 L. The simulator is now reconditioned and ready for use.

Care of the Simulator

Store simulator in the accompanying carrying case. The simulator can be cleaned with Ivory® liquid soap and warm water. Use Nasco Cleaner (LF09919U) to remove stubborn stains. Spray soiled area and wipe with soft cloth or paper towels.

Cautions

Solvents or corrosive materials will damage the simulator. Never place simulator on newsprint or any kind of printed paper or plastic. These materials will transfer an indelible stain. Ball-point pen ink will also make an indelible stain.

Supplies/Replacement Parts for the Heart Catheterization Simulator

- LF00845U** **Life/form®** Venous Blood (1 qt.)
LF01099U Vein Tubing Sealant Kit
LF01013U Replacement Skin and Vein Set
LF00985U **Life/form®** Lubricant Kit
LF09919U Nasco Cleaner

Other Available *Life/form*® Simulators

- LF00698U** Adult Injectable Arm (White)
LF00855U Male Catheterization
LF00856U Female Catheterization
LF00901U Prostate Examination
LF00906U Ostomy Care
LF00929U Surgical Bandaging
LF00957U Enema Administration
LF00958U Pediatric Injectable Arm
LF00961U Intramuscular Injection
LF00984U Breast Examination
LF00995U Arterial Puncture Arm
LF00999U Pediatric Injectable Head
LF01005U First Aid Arm
LF01008U Intradermal Injection Arm
LF01012U Heart Catheterization (TPN)
LF01019U Ear Examination
LF01027U Peritoneal Dialysis
LF01028U Suture Practice Arm
LF01034U Suture Practice Leg
LF01036U Spinal Injection
LF01037U Hemodialysis Practice Arm
LF01038U Episiotomy Suturing Set
LF01042U Suture Kit
LF01062U Pelvic, Normal & Abnormal
LF01063U Stump Bandaging, Upper
LF01064U Stump Bandaging, Lower
LF01069U Cervical Effacement
LF01070U Birthing Station
LF01082U Cricothyrotomy
LF01083U Tracheostomy Care
LF01084U Sigmoidoscopic Examination
LF01087U Central Venous Cannulation
LF01095U Blood Pressure Arm
LF01108U Infant Intraosseous Infusion
LF01121U Advanced IV Arm
LF01131U Venipuncture and Injection Arm
LF01139U Advanced IV Hand
LF01142U Auscultation Trainer
LF01143U Testicular Exam
LF01152U Male & Female Catheter
LF01155U Advanced CPR Dog
LF01162U Venatech IV Trainer
LF01174U NG Tube & Trach Skills
LF01184U Venatech IM & Sub Q
LF01193U Special Needs Baby
LF03000U **CPARLENE**® Series
LF03601U Adult Airway Management Trainer with Stand
LF03602U Adult Airway Management Manikin
LF03609U Child Airway Management Trainer with Stand
LF03616U Child **CRISIS**™ Manikin
LF03617U Deluxe Child **CRISIS**™ Manikin with Arrhythmia Tutor
LF03620U PALS Update Kit
LF03623U Infant Airway Management Trainer with Stand
LF03632U Child Intraosseous Infusion/Femoral Access Leg on a Stand
LF03633U Child Airway Management Trainer Torso
LF03693U **Basic Buddy**® CPR Manikin
LF03699U "Airway Larry" Airway Management Trainer
LF03709U Infant **CRISIS**™ Manikin
LF03720U **Baby Buddy**™ Infant CPR Manikin
LF03750U Fat Old Fred
LF03760U Airway Management/Cricoid Pressure Trainer
LF03770U Chest Tube
LF03953U **CRISIS**™ Manikin, Complete
LF03955U Deluxe **CRISIS**™ Manikin
LF03956U Deluxe "Plus" **CRISIS**™ Manikin
LF03965U Adult **CRISIS**™ Auscultation Manikin
LF03966U Adult **CRISIS**™ Auscultation Manikin with ECG Simulator
LF04000U **GERI**™/**KERI**™ Manikin Series
LF04200U Adult Sternal Intraosseous Infusion
LF06001U CPR Prompt® Adult/Child Manikin
LF06012U CPR Prompt® Infant Manikin
LF06200U CPR Prompt® Keychain Rescue Aid
LF06204U CPR Prompt® Rescue and Practice Aid

Nasco Fort Atkinson

901 Janesville Avenue, P.O. Box 901
Fort Atkinson, Wisconsin 53538-0901
1-800-558-9595

eNasco.com • E-mail: lifeform@eNasco.com

COPYRIGHT © NASCO 1982 PRINTED IN U.S.A. NP 043-82/RV 5-12