

Sakamoto Auscultation Simulator



PC is not included

A Realistic, Versatile Simulator to Facilitate the Ability to Identify Normal and Abnormal Heart and Breath Sounds.

1. Learning through practice with a sense of reality

- Realistic tactile feedback.
- Seven built in speakers (volume adjustable) provide true to life experience of hearing cardiac and breath sounds of actual patients with auscultation.

2. Realistic auscultatory sounds

- Reproduction of complicated cases with combination of 20 cases of cardiac sounds and 12 cases of breath sounds.
- Difference in auscultatory sounds can be confirmed realistically by the use of a personal computer or notepad (windows).

3. Adjustable to details

- Heart rate and respiratory rate adjustable \volume of cardiac and breath sounds is adjustable in each region (cardiac and pulmonary regions) or all regions.

4. Presentation of case profiles

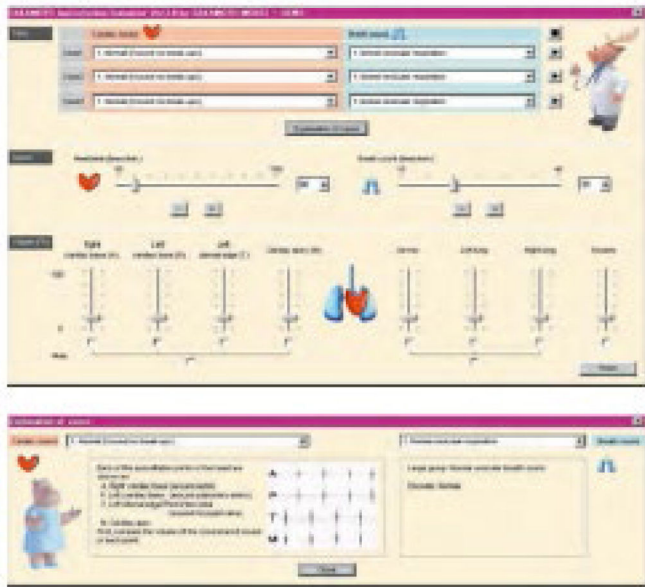
- Presentation of case profiles and points of attention with graphs facilitates understanding of characteristics of each disease.

Sakamoto Auscultation Simulator



Chest Cover (indicates auscultory sites)

Breath Sound



	Major Category	Minor Category	Disease
1	Normal alveolar breath sound		Normal
2	Intermittent rales (moist rales)	Fine crackles	Interstitial pneumonia, pulmonary fibrosis / pulmonary edema
3	Intermittent rales (moist rales)	Coarse crackles	Pulmonary edema, pneumonia, alveolar effusion
4	Continuous rales (dry rales)	Low pitched rhonchi (sonorous rhonchi)	Stenosis of middle large bronchi, bronchial secretion
5	Continuous rales (dry rales)	High pitch rhonchi, wheeze	Bronchiolar stenosis, bronchial asthma
6	Continuous rales (dry rales)	High pitch rhonchi, wheeze	Bronchiolar stenosis, bronchial asthma
7	Tachypnea	Consonating rales	Nervous dyspnea
8	Intensified bronchovesicular sounds		Resting dyspnea
9	Continuous rales (dry rales)+ intermittent rales (moist rales)	High pitch rhonchi, wheeze+fine crackles	Cardiac asthma
10	Continuous rales (dry rales)	High pitch rhonchi, wheeze+prolonged exhalation	Bronchial asthma
11	Abnormal respiratory pattern	Tachypnea (shallow respiration)	Central hyperpnea (midbrain disorder) hyperventilation syndrome
12	Abnormal respiratory pattern	Kussmaul respiration	Diabetic ketoacidosis, uremia

Cardiac Sounds

1 Normal (no splitting of the second sound)	11 Mitral stenosis
2 Normal (split second sound)	12 Mitral insufficiency
3 Abnormal split second sound	13 Aortic stenosis
4 Increased apical second sound in hypertension	14 Aortic insufficiency
5 Apical fourth sound	15 Subaortic stenosis
6 Innocent murmur	16 Atrial septal defect
7 Aortic ejection sound	17 Ventricular septal defect
8 Mid-systolic clicks	18 Pulmonary stenosis
9 Mitral escape clicks /murmur	19 Acute mitral insufficiency
10 Tricuspid insufficiency	20 Pulmonary insufficiency

Includes:

- 1 x Auscultation Simulator Torso
- 1 x Stethoscope
- 1 x CD-ROM Software Disc
- 1 x Chest Cover
- 1 x Storage Case

Weight: 14kg

Case size: 65cm × 58cm × 28cm

Part Number

IMPM164

Description

Sakamoto Auscultation Trainer



Mentone Educational Centre
10-12 McWilliam Street Springvale
Victoria, 3171, AUSTRALIA.

Ph: (03) 9547 6638 Fax: (03) 9553 4562

International

Ph: +61 3 9553 3234 Fax: +61 3 9553 4562