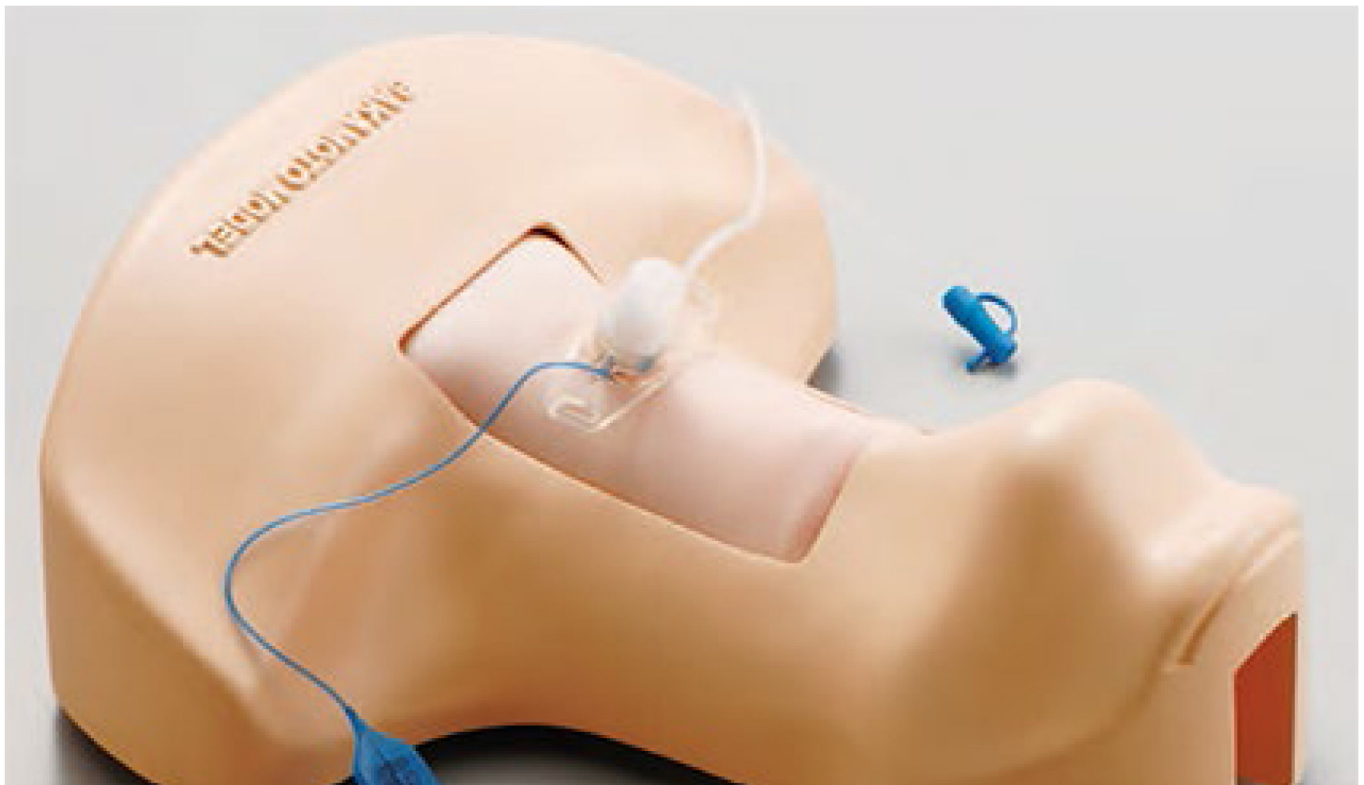


Sakamoto Tracheostomy Trainer



Facilitates training in both conventional and percutaneous tracheotomy and puncture/incision into the cricothyroid ligament. For conventional tracheotomy, different types of incision can be performed including longitudinal, transverse, crucial, U-shaped, and inverted U-shaped incision. Simulating a patient in a supine position with the neck extended, the Sakamoto Tracheostomy Trainer allows the user to determine the proper incision site while identifying arterial locations, and to observe intratracheal conditions from the head.

1. Reuse



Reuse the trachea by turning it upside down or inside out, and the skin by sliding it to either side or turning it upside down.

2. Identification



Determine the proper incision site while identifying arterial locations.

3. Observation

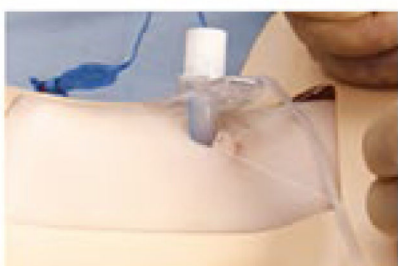
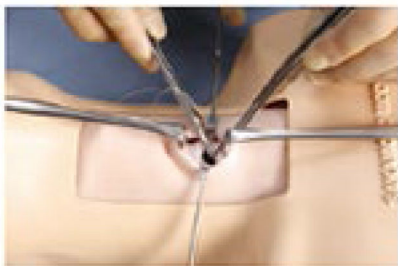
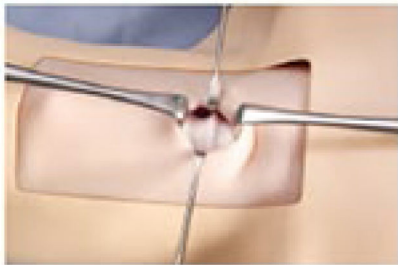


Observe intratracheal conditions.

Sakamoto Tracheostomy Trainer



1. Conventional Tracheotomy



2. Percutaneous Tracheotomy



3. Puncture/incision of the
Cricothyroid ligament.



Weight: 5kg
Case size: W51cm × D42cm × H20cm

- Includes
- 1 x Tracheostomy Trainer
 - 3 x Replacement Trachea
 - 3 x Replacement Skin
 - 1 x Lubricant Oil
 - 1 x Storage Case

Part Number
IMPM172

Description
Sakamoto Tracheostomy Trainer



Mentone Educational Centre
10-12 McWilliam Street Springvale
Victoria, 3171, AUSTRALIA.
Ph: (03) 9547 6638 Fax: (03) 9553 4562
International
Ph: +61 3 9553 3234 Fax: +61 3 9553 4562