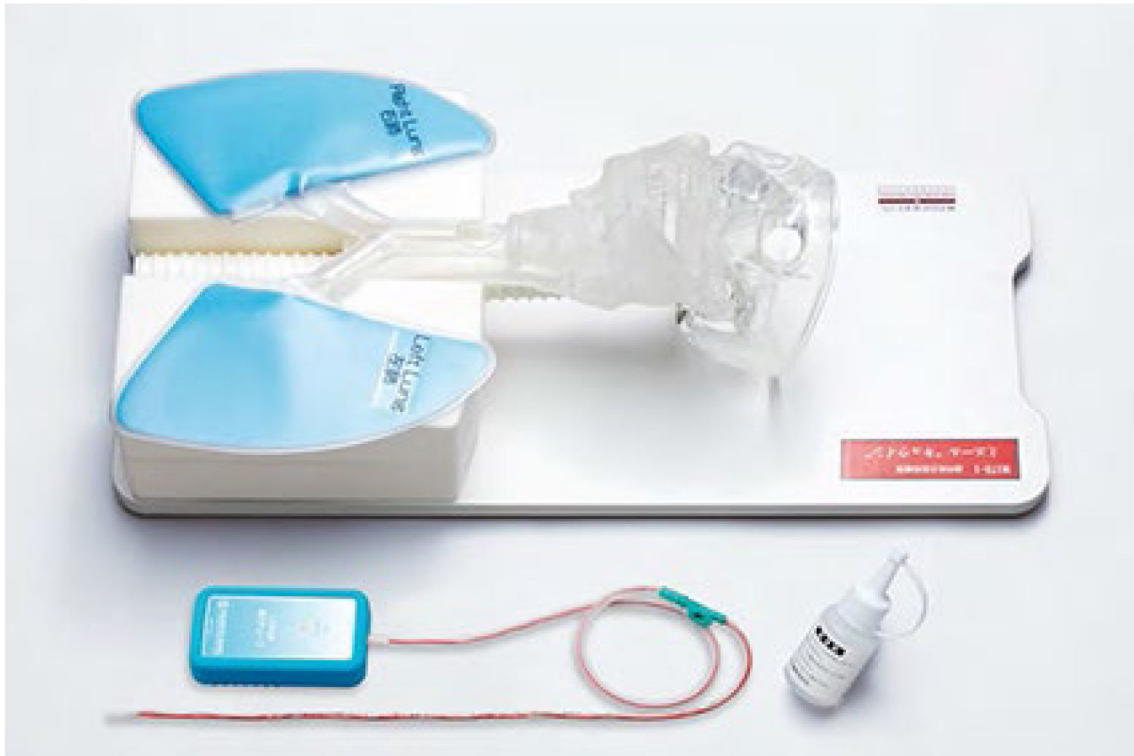


# Sakamoto Transparent Suction Model



Facilitation of training in Oral, Nasal, Pharyngeal, and Tracheal Suction Techniques.

Relevant Anatomic Structures are Visible.

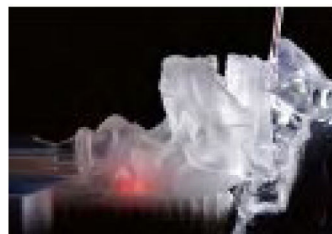
## 1. Internal Structure Visible

Observation of tongue, epiglottis, trachea and esophagus. Facilitates understanding of internal anatomy.



## 2. Verification of tube location by using catheter with LED light.

Catheter with LED light supplied with model for observation of catheter placement.



Catheter Position at Pyriform Sinus



bronchial catheter position

Note: Not Appropriate for Use with Liquids

### Includes:

- 1 x Suction Model
- 1 x Suction Tube with LED Light
- 1 x Lubricant Oil
- 1 x Storage Case

Weight: 5.5kg

Case size/W68×D34×H32cm

# Sakamoto Transparent Suction Model

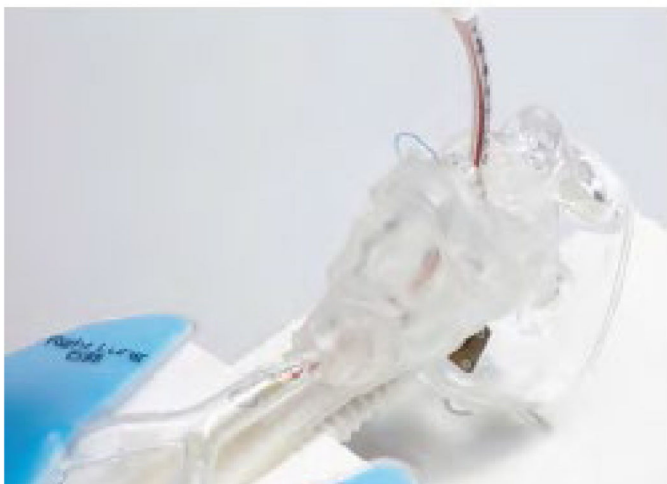
## 1. Flexion / Extension of Head and Neck



## 2. Lateral Movement of the Head Part to Left and Right



## 3. Confirmation of Tube Placement



Part Number  
IMPM175-1

Description  
Sakamoto Transparent Suction Model