

Sakamoto Post Operative Care Suit



*Various drainage tubes, catheters, or adhesive tapes are not included.

A patient is there simply by attaching accessories.

Practicing postoperative care using a naked model can be awkward.

To address this issue, the postoperative care suit, which can be worn over regular clothes, was developed. The body of the suit, which is waterproof, has holes for abdominal and thoracic drainage, and is packaged with suture seals, a stoma, electrodes, a tracheal cannula, and male and female external genitalia.



Suture Seal



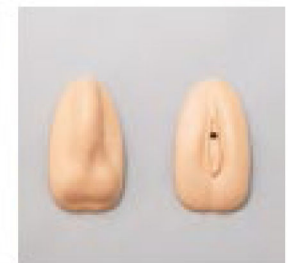
Stoma



Electrodes



Sham Tracheal Cannula



External Genitalia

Weight: 2kg

Part Number
M177

Description
Sakamoto Post Operative Care Suit

Sakamoto Post Operative Care Suit

Various types of postoperative care can be practiced.

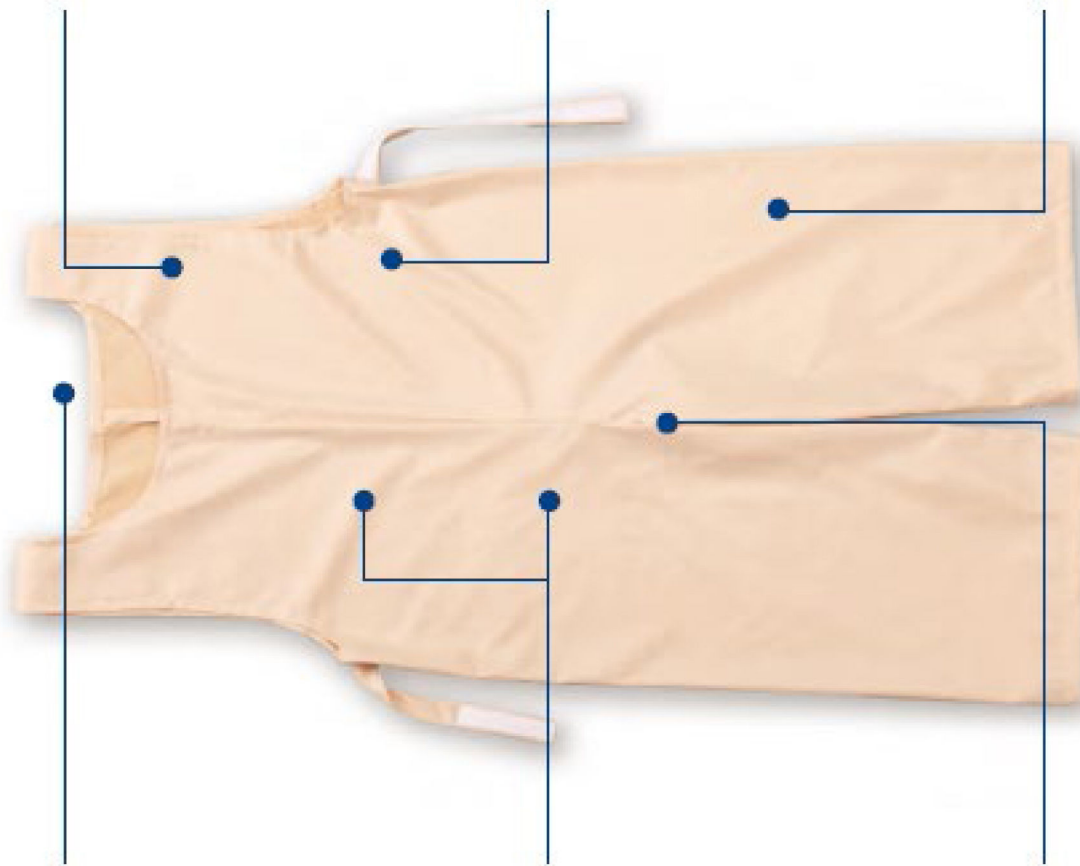
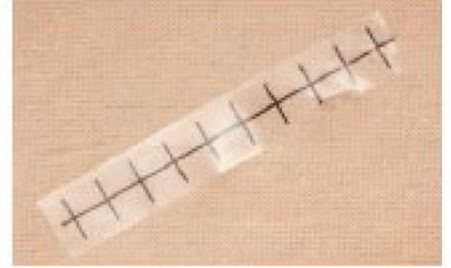
Electrode



Stoma



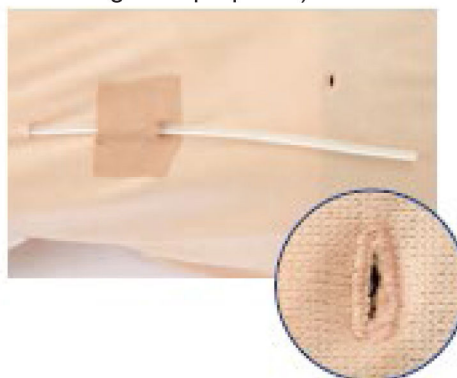
Suture



Tracheotomy



Drain Management (two holes for abdominal and throacic drainage are prepared)



Continuous Bladder Catheterization

