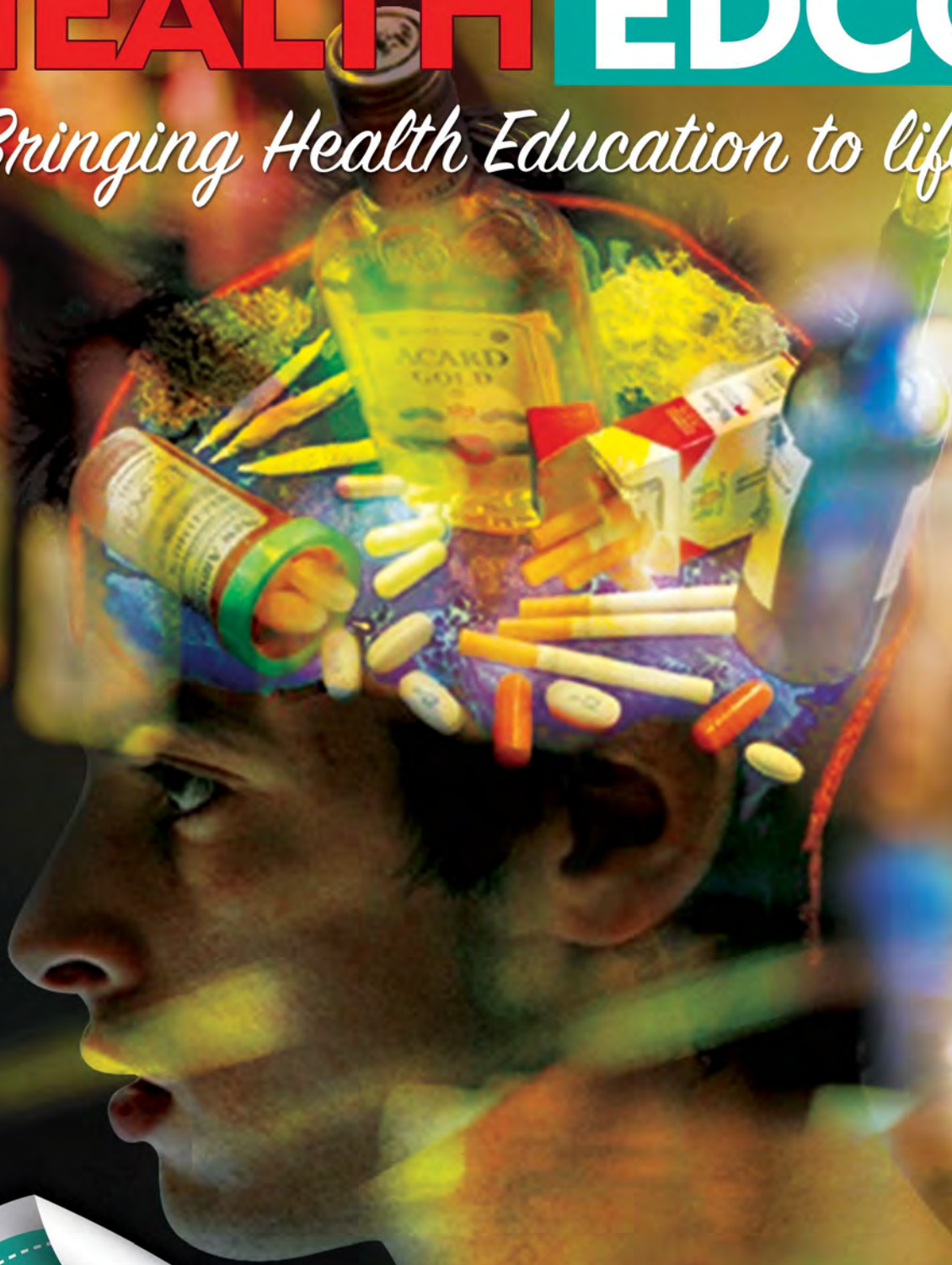


HEALTH ED CO

Bringing Health Education to life



HUNDREDS OF
**HEALTH
SOLUTIONS**
INSIDE!



MENTONE
EDUCATIONAL
ANATOMICAL MODELS AND EDUCATIONAL SUPPLIES

WWW.MENTONE-EDUCATIONAL.COM.AU

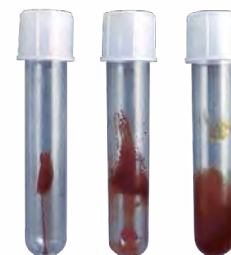
SALES@MENTONE-EDUCATIONAL.COM.AU

Tobacco

Smokey Sue

When "Smokey Sue's" bulb is pumped, tar collects in the tube placed where her "lungs" would be. The tube can be passed around for an effective lesson. Smokey Sue comes with five collection tubes and carrying case.

79206 Smokey Sue
80400 Smokey Sue Collection Tubes (10)



Smokey Sue Smokes for Two

As "Smokey Sue" smokes a cigarette, tar collects around the lifelike model of a 7-month-old foetus. This model graphically shows the pollutants that can reach a developing baby. The jar and foetus are easy to clean.

79210 Smokey Sue Smokes for Two

See Website
for prices



Lou-Wheeze Smoker's Lungs Comparison Model

Viewers get a shocking picture of smoking-related lung damage with this interactive display. Lou-Wheeze has two flexible latex lung models. One represents a healthy lung, and the other depicts the damage done by emphysema and cancer. The attached pump inflates the healthy lung as normal, but the diseased lung inflates sluggishly and fails to deflate completely between "breaths." This model comes with a bellows pump and instructions.

79261 Lou-Wheeze Smoker's Lung
79696 Lou-Wheeze Carrying Case



How Smoking Affects Your Lungs



NORMAL LUNG
 This is the lung of a middle-aged nonsmoker. The black specks result from environmental pollution and are caused by tiny carbon particles that have filtered into the lungs through the pores. This lung is inflated with fluid to show it as it would appear after a deep breath. Notice the smooth shape and texture of a normal, healthy lung.



LUNG CANCER/EMPHYSEMA
 The large greyish-white mass across the top section of the lung is cancer. The black color you see is the result of years of smoking. The soft, irregular, spongy shape replacing the normally smooth shape of a healthy lung is emphysema. Smoking is the leading cause of lung cancer and emphysema.

HEALTH EDUCO

Life or Death Lungs Model Set

These BIOLIKE 2™ lungs provide a shocking, graphic view of the damage smoking causes.

The healthy lung is pink and free of abnormalities. In contrast, the diseased lung is black, has a large greyishwhite cancerous mass, and is covered with spongy bubbles caused by emphysema. These models are sure to make a lasting impression.

The model set comes complete with a carrying case.

79826 Life or Death Lungs Model Set

Hand-Held Mechanical Smoker

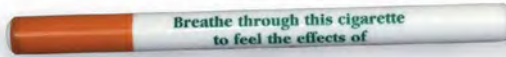
This small, hand-held model actually smokes a cigarette and collects tar on a photo of a real chest X-ray of a lung cancer victim. Stained prints fit into plastic bags, keeping stains intact when they are passed around for closer inspection. Comes with 100 Mini-Lung™ sheets, plastic bags, and a clip to help keep each bag in place.

79202 Hand-Held Mechanical Smoker
80200 Mini Lung Refill Sheets (100)
80201 Mechanical Smoker Replacement Tubes (5)

Tobacco Ingredients Display

The toxic chemicals found in tobacco smoke are more easily remembered by associating them with common and grossly unappealing substances. This eye-catching, Plexiglas, 3-D display resembles a cigarette yet allows viewers to see what is really inside tobacco smoke. It comes with a two-sided tent card that can be used with adults or children.

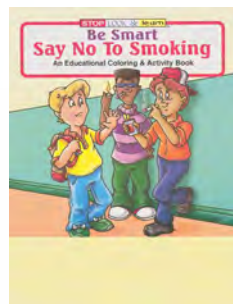
79260 Tobacco Ingredients Display



Shortness of Breath Cigarette

When the user breathes through this hollow "cigarette," air deprivation is immediate. Each cigarette has text explaining that breathing through it will simulate the shortness of breath that is caused by lung damage from smoking. Cigarettes are made of durable plastic.

79709 Shortness of Breath Cigarette (20)



Say No to Smoking Colouring Book

This entertaining and informative activity book teaches kids about the dangers of smoking through a variety of games and puzzles. Encourages kids to say no to smoking. It explains why smoking is dangerous to those who smoke and the people around them.

41007 Say No to Smoking Colouring Book (50)

Giant Cigarette Action Display

The health benefits of quitting smoking are identified in this interactive display. The display details the positive effects of smoking cessation in time spans ranging from a few minutes to several years after a smoker's last cigarette. The user simply turns the outer sleeve, which progressively reveals the stages of improved health that result from quitting smoking.

79109 Giant Cigarette Action Display



Giant Cigarette Model

This model provides a striking demonstration of the dangers of cigarette smoke. It contains a banner showing the poisonous or cancer-causing chemicals contained in smoke. The banner can also be hung on a wall for continual study.

79110 Giant Cigarette Model



The ABCs of Smoking - PowerPoint

Based on the popular "The ABCs of Smoking" booklet, this PowerPoint presentation covers each of the conditions discussed in the booklet. The slides contain text about each condition and feature graphic medical images. The final slide details ways to quit smoking, making this presentation ideal for tobacco cessation programs. Contains 41 slides. ©2006

48500 The ABCs of Smoking, PowerPoint

Tobacco



Mr Dip Lip

This hand painted, 3-D model of the mouth opens and closes from the back like a puppet. The flesh-like BIOLIKE™ lips retract to show the effects that dipping has on the inner lips, gums, and teeth.

79156 Mr Dip Lip



Lung Ashtray

One of HEALTH EDCO's first products, this innovative educational tool helped launch the antismoking efforts of the 1960s. Cigarette smoke rises up through one of the transparent lungs of the ashtray, turning it brown as tar collects. Because no smoke passes through the other lung, it stays clear. Ideal for demonstrating the harmful effects smoking has on the lungs.

15000 Lung Ashtray

Mr Gross Mouth

One of our most popular products, this hinged model of the teeth, tongue, and oral cavity shows the effects of smokeless tobacco use.

The hand painted model is mounted on a wooden base. It includes a bottle with simulated tobacco that can be used to make tobacco juice.

79152 Mr Gross Mouth

79154 Mr Gross Mouth Replacement Tongue

79161 Mr Clean / Gross Mouth Carrying Case



A Year's Worth of Tar

This striking, sealed exhibit, containing a cigarette package and cigarette butts submerged in gooey "tar." It represents the amount of the carcinogenic liquid that smoking half a pack of cigarettes per day for 1 year would put through a person's lungs.

79120 A Year's Worth of Tar

Cause of Death: Secondhand Smoke Display

Emphysema blebs bulge from its surface. Multiple tumors infest once-healthy tissue. It sits in an oozing, brown pool of tar. Certainly this is the lung of a chain smoker, right? Wrong. This surprising "post-mortem" lung model shows that secondhand smoke can be an indiscriminate killer, infiltrating and damaging nonsmokers' lungs just as it does those of a smoker.

78748 Cause of Death: Secondhand Smoke Display

Smoker's Foul Mouth Display

Graphically displaying what cigarette smoking can do to the mouth, this hand painted model details a variety of harmful effects, including gum disease, tooth decay, lip cancer, and more. This unique, hinged model includes two removable tongues. One tongue depicts a "hairy tongue", and the other portrays leukoplakia and tongue cancer. Mouth is mounted on a hand painted model of the lit end of a cigarette. Comes with a simulated cigarette that can be used as a pointer.

79287 Smoker's Foul Mouth Display

79288 Smoker's Foul Mouth Carrying Case



What's in Tobacco Smoke? Tear Pad

A companion piece to the Tobacco Ingredients display, this informative tear pad lists some of the chemicals found in tobacco smoke and gives examples of other substances in which they are commonly found. The health consequences of inhaling tobacco smoke and the dangers of second-hand smoke are also discussed. Two-sided, 100 sheets per pad.

52584 What's in Tobacco Smoke? Tear Pad





Hazards during Pregnancy Folding Display

This folding display provides information about the hazardous substances a mother and baby can be exposed to and the consequences of exposure. Topics include diseases and infections, chemicals, alcohol, tobacco, illegal drugs, prescription and non-prescription drugs, and more.

79349 Hazards during Pregnancy Folding Display

What Mommy Does, Baby Does Display

This display features a life-like fetus suspended in a jar simulating the fetal environment. Coloured liquids representing tobacco, drugs, and alcohol are poured into the "mother's" mouth quickly enveloping the fetus in a dark swirling cloud of pollutants.

78745 What Mommy Does, Baby Does Display



What Mommy Does, Baby Does Model

With cigarette butts, pills, a syringe, and beer bottle caps suspended in plastic, this 3-D model illustrates how alcohol, tobacco, and other substances can cross the placenta and damage a foetus. Excellent for health educators and healthcare professionals to use in education or displays.

79809 What Mommy Does, Baby Does Model



Smoking & Your Baby Folding Display

Exposure to tobacco smoke poses serious health risks, especially during pregnancy. This folding display clearly outlines the hazards of smoking during and after pregnancy. Also includes information on the dangers of low birth weight.

79022 Smoking & Your Baby Folding Display

Tobacco



Effects & Hazards of Smoking Folding Display

This folding display helps viewers understand the initial and long-term effects of nicotine and cigarette smoke on the human body. Also covers problems caused by second hand smoke.

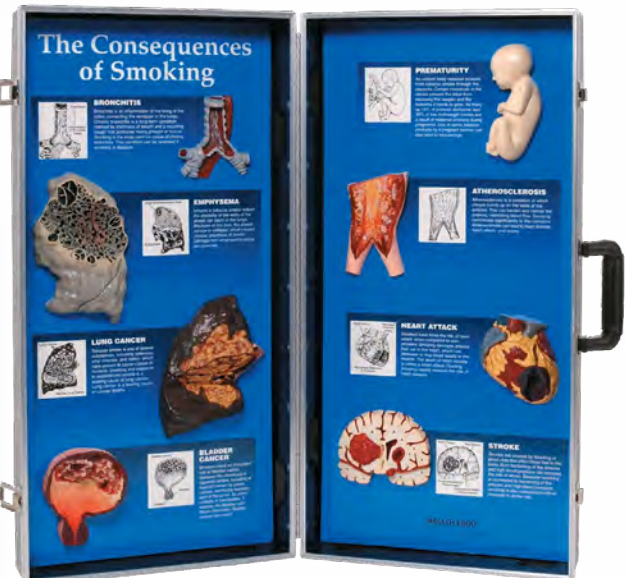
79079 Effects & Hazards of Smoking Folding Display



Smoking: Don't Get Burned Folding Display

Teen-oriented graphics and language help young viewers understand that smoking can have negative and immediate effects on their health and appearance. This sturdy folding display identifies the risks of tobacco use and explains that cigarette "alternatives" such as clove cigarettes and smokeless tobacco are not safe choices, either.

79016 Smoking: Don't Get Burned Folding Display



The Consequences of Smoking 3D Display

Featuring hand painted, 3-D models, this display shows the diseases and conditions that can result from smoking. Diseases include cancer, heart disease, emphysema, and more. The display is contained within its own durable carrying case.

79601 Consequences of Smoking 3D Display

The Truth about Drugs, Alcohol & Tobacco Game

With 75 fact-filled question cards, this game gets players thinking about the dangers of substance abuse in a non-threatening environment. It can be played to cover alcohol, drugs, and tobacco together or divided to cover each topic separately. This game is ideal for classrooms, substance abuse programs, or counselling environments. Meets education standards and includes reproducible study guide with answer key. For 2 or more players or teams. Year 6-Adult.

78568 The Truth about Drugs, Alcohol & Tobacco Game



Clever Catch Tobacco Ball

Help players catch the truth about tobacco with the 75 questions about the dangers of tobacco printed on the surface of this ball. Comes with instructions and answer sheet. Years 5-8.

79264 Clever Catch Tobacco Ball



The Consequences of Second hand Smoke 3D Display

A great visual teaching tool, this display uses 3-D, hand painted models and informative text to demonstrate and explain health-related conditions associated with second hand smoke inhalation. The display is contained within its own portable carrying case.

79605 The Consequences of Second hand Smoke 3D Display



The Consequences of Smokeless Tobacco Use 3D Display

This 3-D display graphically shows that using smokeless tobacco is harmful and deadly. Detailed, hand painted models illustrate health conditions caused by smokeless tobacco use, and the informative, easy-to-understand text is complemented by line drawings. The display is contained within its own durable carrying case.

79603 Consequences of Smokeless Tobacco Use 3D Display

A Wreck Isn't the Only Thing That Can Harm Them Poster

Although safely secured in a car seat, the infant in this poster is still in danger from the driver's second hand smoke. Children can develop asthma and many other health problems because of second hand smoke. Great for schools, waiting rooms, and more.

90244 A Wreck Isn't the Only Thing That Can Harm Them Poster



Effects & Hazards of Second hand Smoke Folding Display

Many people don't realize that the smoke produced by a burning cigarette is deadly. This folding display points out that inhaling second hand smoke puts people at risk for developing a number of serious conditions and diseases.

79010 Effects & Hazards of Second hand Smoke F/Display



Quit Smoking for Life Folding Display

Informative and motivational, this folding display encourages viewers to quit smoking and provides tips and strategies to become smoke-free. Also addresses reasons to quit and concerns about weight gain.

79030 Quit Smoking for Life Folding Display

What's Your Poison? Display

Emphasizing the poisons contained in cigarette smoke, this interactive 3-D display associates those poisons with other items that contain them. Included are toilet cleaner (ammonia), a lighter (butane), batteries (cadmium), and 12 other items. Background provides details on each poison and what it can do to the body.

72090 What's Your Poison? Display



Smokey Eyes Goggles Game Kit

Smoking is the most preventable cause of macular degeneration, an eye disease that can lead to a loss of vision. These goggles are designed to simulate the effects of this serious disease and provide emphasis for the idea that not smoking is the wisest choice. Game kit includes a pair of Smokey Eyes Goggles, five stress balls, four toss bags, a catch bucket, a bag with target imprint, and a Smokey Eyes Goggles Activity Guide with activities and reproducibles.

79373 Smokey Eyes Goggles Game Kit

Smoker's Roulette Game

This game shows that smoking is a high-risk gamble. With satiric artwork that lampoons popular cigarette brands, the roulette wheel demonstrates that smoking dangers include lung cancer, emphysema, heart disease, and more. Comes with teacher's guide.

79139 Smoker's Roulette Game

Why Kids Smoke	Effects of Smoking	Tobacco Facts	Ways to Say No	Smoking Prevention Activities
Peer pressure	Dry, dull skin	Tobacco companies target new smokers	Be hungry	Hold dances with anti-smoking themes
Low self-esteem	Yellow teeth	Most new smokers are under 18	Walk away	Teach younger kids about the dangers of tobacco use
Stress relief	Decreased stamina	Smoking Prevention Bingo	Be the boss	Learn about tobacco marketing
To be cool	Bad breath	Smoking causes one death every ten seconds	Find others who don't smoke	Create anti-smoking greeting cards
A relative smoker	Hair loss	Most kids don't smoke	Be polite	Celebrate Red Ribbon Week

Smoking Prevention Bingo

Offering a unique approach to smoking prevention education. This bingo game covers five important topics: why kids smoke, the effects of smoking, facts about tobacco, ways to say no, and smoking prevention activities. The calling cards provide additional information that can serve as a springboard for group discussion. The game includes calling cards, 16 bingo cards, instructions, informative handout, and bingo chips.

79354 Smoking Prevention Bingo

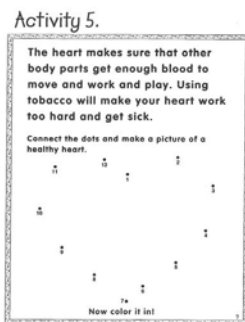
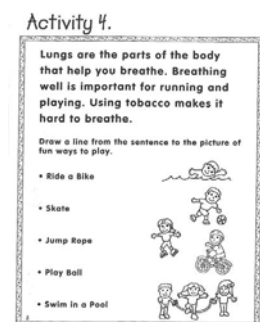


I Love Not Smoking! Activity Book

A storybook that features activity and colouring pages on smoking.

This book helps children identify themselves as nonsmokers and highlights the benefits of a lifetime of good health.

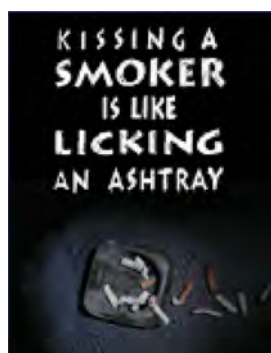
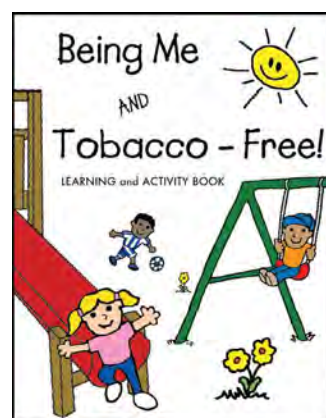
50674 I Love Not Smoking! Activity Book



Being Me and Tobacco-Free!

Activity Book Designed to introduce young children to the dangers of tobacco. This activity book uses simple language to explain what tobacco is, how it is used, and why it is harmful. Activities include drawing pictures, matching words to images, connecting the dots, and colouring pictures.

51362 Being Me and Tobacco-Free!



Kissing a Smoker Poster

This striking poster offers a dramatic twist on a classic message. Instead of asking smokers to consider their health and the health of loved ones, this poster raises the question of social disapproval.

90409 Kissing a Smoker Poster

See Website for prices



Smoked Lung Model

This realistic, 3-D lung model lets viewers see just what cigarette smoking does to their lungs. When the top is opened, a greyish-white fibrous-feeling cancer is revealed. Made from BIOLIKE 2™ synthetic tissue, this model of a right lung with emphysema and cancer is excellent for individual and group instruction.

26813 Smoked Lung Model



Cough Up a Lung Model

A great hands-on tool for helping viewers understand the dangers of smoking, this graphic model shows a lung damaged by COPD (chronic bronchitis and emphysema) and cancer. Realistic model can be shown either with two halves placed together to form a whole lung or split apart to show a cross section of the lung. Comes with an informative tent card.

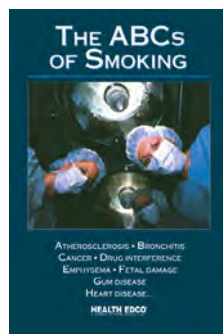
78958 Cough Up a Lung Model



Death of a Lung Easel Display

When a patient or student views realistic models of lung tissue affected by smoking, the impact is stronger than any words or photographs. Cast from real specimens, these three hand painted models represent a normal lung, a lung with emphysema, and a lung with cancer. This unique, 3-D display illustrates the dangers of smoking in a way viewers will never forget. Measures 23 x 30cm.

79148 Death of a Lung Easel Display



The ABCs of Smoking Booklet

Medical photography and detailed text combine to describe dozens of conditions and diseases associated with tobacco use. This is an effective tool for use in smoking cessation programs, health fairs, clinics, and more. 16 pages, 14 x 22cm. (Pack of 50)

40013 The ABCs of Smoking Booklet (50)

The ABCs of Smoking Flip Chart

Medical photography and detailed text combine to describe dozens of conditions and diseases associated with tobacco use. This flip chart which is an effective tool for use in smoking cessation programs, health fairs, clinics, and more. The flip chart features presenter's notes on the reverse panels. 6 panels.

43107 The ABCs of Smoking Flip Chart

Teeth in Tobacco Juice

Sealed in a plastic jar of simulated tobacco juice and tobacco flakes. This model of damaged and decayed teeth and gums sends a clear message about the effects of smokeless tobacco use.

79123 Teeth in Tobacco Juice

Clem's Phlegm

Graphically demonstrating one of the nasty consequences of smoking, this attention-getting sealed jar contains about 2 weeks of the phlegm that would be coughed up by a smoker with COPD. Great discussion starter for any anti-smoking lesson or program.

79201 Clem's Phlegm





Tainted Blood: Smokers' Blood Revealed Display

A representation of an artery where carbon monoxide is keeping oxygen from flowing to the body's organs and muscles. Also shows plaque buildup caused by smoking and poisons from cigarette smoke traveling through the bloodstream. Two-sided tent card explains the model in detail.

79864 Tainted Blood: Smokers' Blood Revealed

Disgusting Smell: Tobacco Display

This fun display counts down the most rotten smells imaginable and then allows viewers to smell the worst, foulest, nastiest smell of all: tobacco smoke. This display reminds viewers that the rancid smell of tobacco smoke (full of formaldehyde, benzene, and other poisonous chemicals) is absorbed into the hair, clothes, and skin of smokers. It is an excellent way to present one of the more repellent aspects of smoking without using real cigarettes.

79798 Disgusting Smell: Tobacco Display

79799 Disgusting Smell: Tobacco Replacement Pouch



Alcohol and Pregnancy Booklet

A pregnant woman who drinks alcohol puts her baby at risk for serious birth defects and developmental problems. This booklet helps educate women about the dangers of alcohol consumption during pregnancy and emphasizes that no amount of alcohol is safe during pregnancy.

40053 Alcohol and Pregnancy Booklet (50)



Preventing FAS Booklet

This pamphlet defines foetal alcohol syndrome (FAS) and describes its lifelong effects. The pamphlet emphasizes that no amount of alcohol is safe during pregnancy. 8 panels.

0 x 22cm folded. (Pack of 50)

38612 Preventing FAS Booklet (50)



Sex under the Influence Awareness Kit

Sex and alcohol are a dangerous combination, and this kit helps demonstrate that important point. Users quickly discover how difficult it can be to keep sex safe after drinking alcohol. The kit comes with an 'Economy Condom Training Model' (with syringe, UV light-sensitive fluid, and condoms), a pair of 'Boozed & Confused™ Night-time Goggles', and an activity guide that describes activities that use the kit and provides information about the dangers of mixing alcohol and sexual activity.

75080 Sex under the Influence Awareness Kit
79746 UV Lamp



Don't Get Stupid! Booklet

When it comes to discussing serious topics, young people rarely respond to lectures. Unlike conventional educational materials, this booklet uses humorous illustrations and a touch of irreverent wit to get sceptical teens to consider the dangers of alcohol use.

49500 Don't Get Stupid! Booklet (50)



The Consequences of Alcohol Abuse 3D Display

This 3-D display shows many of the physical consequences of alcohol abuse. Permanently mounted, life-size, hand painted models are graphic and accurate. Each model is described in easy-to-understand terms. The display is contained within its own sturdy carrying case.

79612 The Consequences of Alcohol Abuse 3D Display

DrinkAware™ Display

Helping viewers understand recommended alcohol limits, this eye-catching display provides clear examples of one standard drink. The display features four durable, plastic models of alcoholic beverages: a 350ml beer, a 350ml cooler, a 40ml shot of spirits, and a 60ml martini. It includes an informative tent card that defines heavy drinking, binge drinking, and moderate drinking.

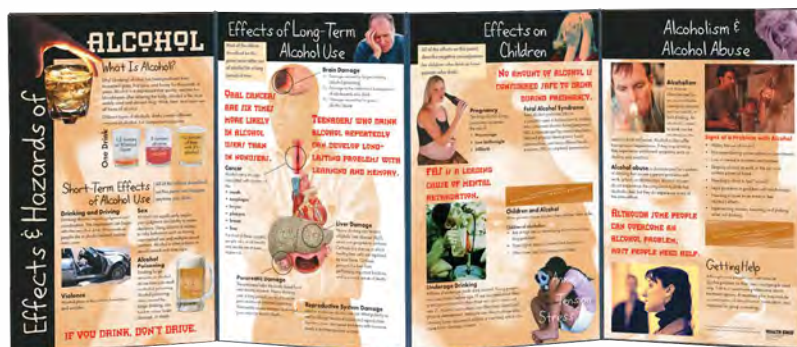
78640 DrinkAware™ Display



What You Should Know About Binge Drinking Folding Display

Binge drinking is a major concern on high school and university campuses. This teen-focused folding display explains binge drinking and discusses the consequences that can affect a person's health, safety, and future. It also includes information on alcohol poisoning and its symptoms.

79021 What You Should Know About Binge Drinking Folding Display



Effects & Hazards of Alcohol Folding Display

This folding display graphically depicts the effects alcohol has on the body. The display describes the damage to organs and body systems. It also provides information on alcohol-related health problems, foetal alcohol syndrome, and more.

79012 Effects & Hazards of Alcohol Folding Display



Alcohol



DW Eyes™ Game Kit

Wear the Drunk & Dangerous™ Goggles and experience the visual distortion, loss of perception, and lack of control that makes drunk drivers so dangerous.

The role-playing games use the goggles to make drunk driving consequences more realistic. The game kit includes two pairs of Drunk & Dangerous™ goggles, an instructional DVD, Wreck Your Life game, teacher's guide with reproducible handouts, and 25 16-page booklets. No specific blood alcohol concentration is represented.

79187 DW Eyes™ Game Kit with Goggles

79198 DW Eyes™ Game Kit with Glasses

79197 DW Eyes™ Goggles

79190A DW Eyes™ Glasses

See Website
for prices



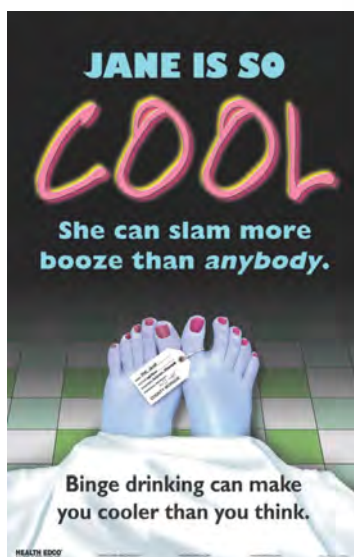
Boozed and Confused™ Night-time Goggles Game Kit

Specifically designed to simulate the night-time conditions that drunk drivers may face, the Boozed and Confused™ Night-time Goggles are perfect for demonstrating how alcohol affects depth perception, reaction time, and coordination.

Game kit includes two sets of Boozed and Confused Night-time Goggles, ten stress balls, six flashlights, two plastic bowling balls, a set of ten plastic bowling pins, a roll of tape, and an activity guide with teaching suggestions and reproducible handouts.

79297 Boozed and Confused™ Night-time Goggles Game Kit

79198 DW Eyes™ Game Kit with Glasses



Drunk & Dangerous™ Package with Glasses

The specially designed eyewear re-creates the visual distortion loss of perception and lack of control that impair drunk drivers. The package includes: 1 pair of glasses, remote control car and beverage set

79190 Drunk & Dangerous™ Package with Glasses

79199 Drunk & Dangerous™ Package with Goggles

79190A DW Eyes™ Glasses

79197 DW Eyes™ Goggles

79712 Remote Control Car

79755 Beverage Set



Alcohol Changes Everything Game

This fun and educational board game helps players learn how life can change dramatically when alcohol is abused. Players earn points by moving through the game and answering questions about the consequences of alcohol abuse. On several spaces, players draw an alcohol danger event card that describes an occasion during which alcohol abuse could occur. Players use the included alcohol bottle decoder to read the card's hidden message and see whether alcohol has caused costly consequences. For 2-8 players or teams.

79063 Alcohol Changes Everything Game

Drinking Clock Action Display

Reinforcing the message that people should take time after drinking to be safe. This informative display reveals the approximate amount of time the body takes to process alcohol. It is ideal for driver education, health classes, or community education. Comes complete with teaching suggestions.

79130 Drinking Clock Action Display



Alcohol Prevention Bingo

Each card in this unique version of bingo contains a fact or idea to get players thinking about why they shouldn't use alcohol. The cards include information about why kids drink, alcohol myths and facts, the effects of drinking, the dangers of drinking and driving, and how to say no. The game includes 16 bingo cards, calling cards, instructions, and bingo chips. Years 7-12.

79355 Alcohol Prevention Bingo

Spin the Bottle Game

This fun and interactive game puts a new spin on alcohol education. The vivid design features a wheel which includes a mock bottle of whiskey and numerous alcohol-related categories such as violence, depression, and drinking and driving. Comes with teaching suggestions and trivia cards.

79339 Spin the Bottle Game



Alcohol / Drugs



Death of a Liver Easel Display

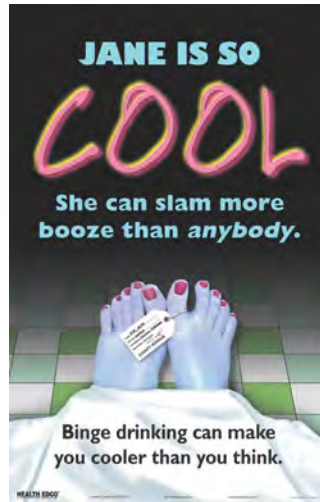
Emphasizing alcohol's role in liver disease, this easel display features cross-sectional, 3-D, hand painted models. The models represent a normal liver, a liver with hepatitis, and a cirrhotic liver.

79150 Death of a Liver Easel Display

Jane Is So Cool Poster

By showing that death is a possible consequence of binge drinking, this poster emphasizes the danger of ingesting too much alcohol too quickly.

90019 Jane Is So Cool Poster



Dial-A-Drug Wheel

This wheel provides information about the most common types of drugs, their uses, and symptoms of abuse.

85100 Dial-A-Drug Wheel



Clever Catch Drugs & Alcohol Ball

Toss this ball around as a way to introduce the difficult topic of substance abuse in a fun way. Features more than 30 questions about how drugs and alcohol can affect health and lifestyle. Comes with instructions and answer sheet. Years 5-8.

79688 Clever Catch Drugs & Alcohol Ball



Substance Abuse ID Guide Booklet

One of the biggest problems in dealing with drugs and alcohol is being able to recognize signs of abuse. This material can be used to teach employees, families, and students about different types of drugs and the symptoms of their use. Covers alcohol, inhalants, narcotics, depressants, stimulants, cocaine, hallucinogens, and marijuana.

40022 Substance Abuse ID Guide Booklet (50)



Drugs, Alcohol, and Tobacco Bingo

Using the popular bingo format, this game is a great tool to help players learn the dangers of drugs, alcohol, and tobacco. Covers stimulants, depressants, tobacco, marijuana, hallucinogens, alcohol, and other drugs. Includes 30 bingo cards, 75 question cards, bingo chips, instructions, and master key. Year 6-Adult.

79871 Drugs, Alcohol, and Tobacco Bingo



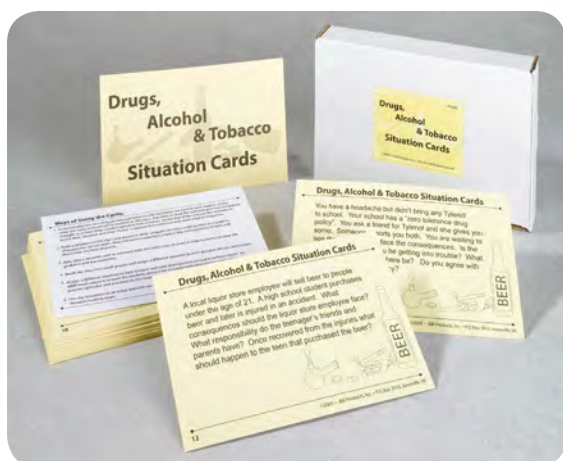
See Website for prices



Drug Identification Guide

This large display uses realistic facsimiles to show today's most commonly abused drugs. Hand painted, 3-D models are enclosed behind Plexiglas. Stands on any table top for easy display. The guide comes with informative, reproducible handout.

79216 Drug Identification Guide
79585 Display Carrying Case



Drugs, Alcohol and Tobacco Situation Cards

These 50 situation cards present real-life dilemmas, allowing players to discuss and explore appropriate resolutions. The cards can be used by individuals, small or large groups. The cards come with teacher's instructions and an idea sheet. The situations described on the cards do not necessarily have a "right" or "wrong" answer. Years 6-12.

79874 Drugs, Alcohol and Tobacco Situation Cards



Effects and Hazards of Substance Abuse Folding Display

Outlining both the physical and social consequences of substance abuse, this folding display offers an excellent overview of a number of dangerous substances, including narcotics, inhalants, club drugs, and more. This display also includes information on getting help for a substance abuse problem.

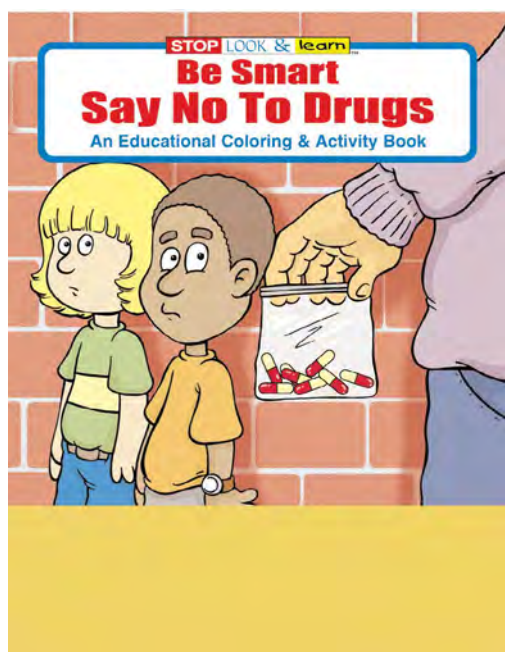
79053 Effects and Hazards of Substance Abuse F/Display



Club Drugs Folding Display

Youth-oriented graphics and informative text tell the truth about club drugs such as ecstasy, methamphetamine, GHB, ketamine, LSD, and Rohypnol. This folding display identifies possible signs of club drug use while emphasizing the fact that these drugs can have dangerous and deadly effects. Also includes information on getting help for a club drug problem.

79008 Club Drugs Folding Display

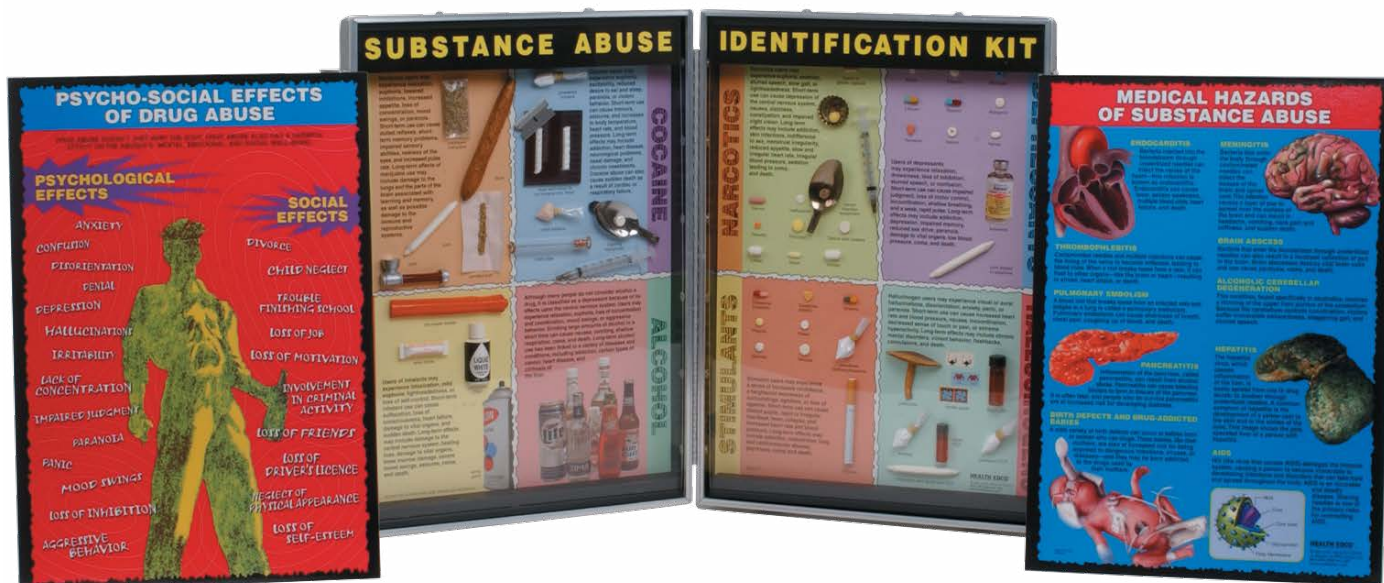


Say No to Drugs Colouring Book

This fun-filled colouring and activity book teaches children to recognize unsafe situations and say no to drugs. PreK-Year 5. 16 pages.

41008 Say No to Drugs Colouring Book

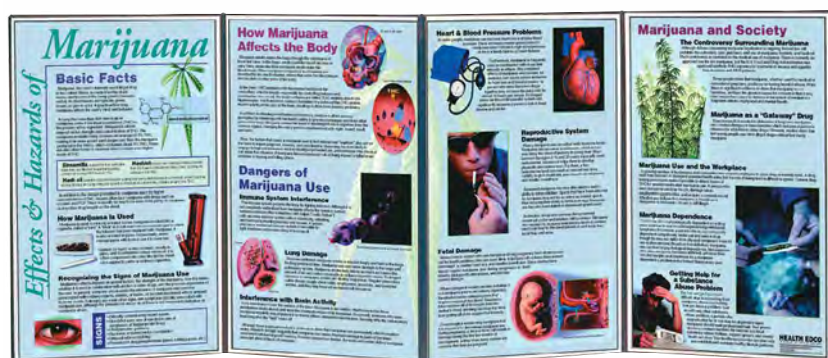




Substance Abuse Identification Kit

Informative and eye-catching, this 3-D display identifies several dangerous drugs and lists short and long-term effects of drug abuse. It features hand painted models and a durable Plexiglas cover. It includes two stand-alone panels and an informative, reproducible handout.

79254 Substance Abuse Identification Kit



Effects & Hazards of Marijuana Folding Display

This graphic display explains what marijuana is, how it's used, and its effects and hazards. Also includes information on getting help for a marijuana problem.

79269 Effects & Hazards of Marijuana Folding Display



Substance Abuse Identification Guide Flip Chart

One of the biggest problems in dealing with drugs and alcohol is being able to recognize signs of abuse. This material can be used to teach employees, families, and students about different types of drugs and the symptoms of their use. Covers alcohol, inhalants, narcotics, depressants, stimulants, cocaine, hallucinogens, and marijuana. The flip chart features presenter's notes on reverse panels.

43161 Substance Abuse Identification Guide Flip Chart



Drug Education Guide

Ideal for educating parents and youth, this 3-D, Plexiglass covered display identifies basic drug groups and gives the medical and slang names, medical uses, and possible effects of use for many common drugs.

The guide features accurate, hand painted drug facsimiles and comes with an informative, reproducible handout.

79236 Drug Education Guide

79585 Display Carrying case

Sex Education



Sex under the Influence Awareness Kit

Sex and alcohol are a dangerous combination, and this kit helps demonstrate that important point. Users quickly discover how difficult it can be to keep sex safe after drinking alcohol. The kit comes with an 'Economy Condom Training Model' (with syringe, UV light-sensitive fluid, and condoms), a pair of 'Boozed & Confused™ Night-time Goggles', and an activity guide that describes activities that use the kit and provides information about the dangers of mixing alcohol and sexual activity.

75080 Sex under the Influence Awareness Kit

79746 UV Lamp

Deluxe Condom Training Model, Beige

This realistic BIOLIKE 2™ model makes demonstrating the proper use of condoms simple. "Ejaculation" of UV light-sensitive fluid shows the need for care during intercourse to avoid contact with body fluids. Suction cups hold the stand securely to the tabletop during the demonstration. The model comes with a syringe, UV light-sensitive fluid, 12 condoms, and a carrying case.

26403 Deluxe Condom Training Model, Beige

26402 Deluxe Condom Training Model, Brown

79754 UV Light Sensitive Fluid

79746 UV Lamp



Economy Condom Training Model

Teaching safer-sex practices is possible without breaking your budget with this model. The model "ejaculates" UV light-sensitive fluid to demonstrate the importance of correct condom use. The model is made of realistic BIOLIKE 2™ material and comes with a syringe, UV light-sensitive fluid, and six condoms.

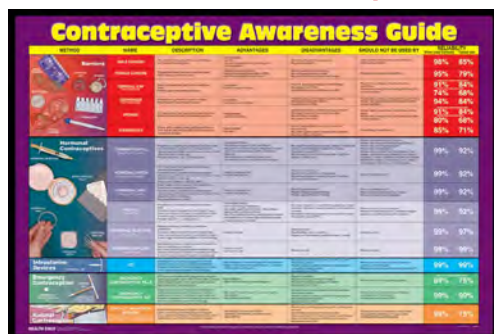
27006 Economy Condom Training Model

79746 UV Lamp

Female Pelvis Contraceptive Model

Made from soft BIOLIKE 2™, this model provides a cross section of a female pelvis for demonstrating proper insertion of female condoms, diaphragms, cervical caps, contraceptive sponges, and spermicide. The side cut-out lets viewers see and understand contraceptive placement and removal.

26462 Female Pelvis Contraceptive Model



Contraceptive Awareness Guide

This attention-grabbing framed chart shows a full range of contraception options. It shows the advantages, disadvantages, and reliability of each method listed. The chart has its own easel for tabletop display or it can be mounted on a wall.

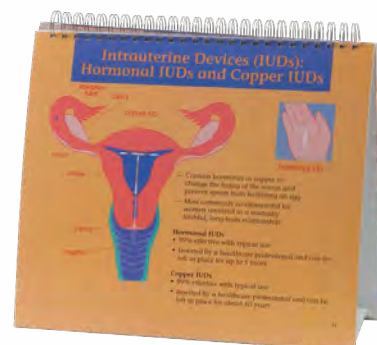
79221 Contraceptive Awareness Guide

90721 Contraceptive Awareness Guide Chart

Understanding Birth Control Flip Chart

A great tool for healthcare professionals and educators, this flip chart discusses male and female reproductive anatomy, menstruation, conception, and methods of contraception. Features presenter's notes on reverse panels.

43325 Understanding Birth Control Flip Chart





Designed for teens, this game helps players learn important information about human sexuality. The activity cards challenge participants to distinguish fact from fiction about the reproductive system, pregnancy, birth, sexually transmitted diseases, and contraception. It includes 50 situation cards, instructions, and master answer key. For 2 or more players or teams. Years 6-12.

79872 Fact or Fiction: Exploring Sexual Issues with Teens Game

In this game of chance, players are faced with different sexual situations and discover that their actions have consequences. The game, which can be played in teams or individually, addresses STDs, contraceptives, date rape, incest, and teen pregnancy. It includes game cards and a teacher's guide. Years 7-12.

79 | 22 Wheel of Choices Game



This colourful roulette game is an excellent tool for starting a discussion about sexually transmitted diseases. The roulette wheel features common STDs, and the game cards present real-life scenarios that address different sexual situations. The game includes game cards and a leader's guide that provides instructions and additional information about STDs.

79195 STD Roulette Game



This bingo game is a great tool to help players understand important aspects of human sexuality. Topics include puberty, sexually transmitted diseases, pregnancy, and contraception. The game includes 30 bingo cards, 75 question cards, instructions, and master answer key. Years 6-12.

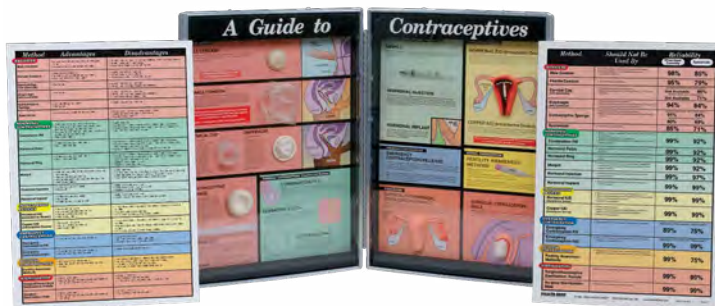
79873 Human Sexuality Bingo

An innovative way to teach about the possible consequences of sex, this dynamic game encourages players to think about their actions. Players are rewarded for knowing facts about STDs, pregnancy, and sexual activity while also being faced with possible situations and decisions concerning sex. nstructors can adapt the game to suit their classroom needs. The game includes a game board, spinner, eight game pieces, one die, 24 dilemma cards, 72 question cards, three track sheets, and instructions. The 56 x 71cm game board is great for working in large groups. or 2-8 players or teams. Year 7-Adult.

79270 Sex & Consequences Game



Sex Education

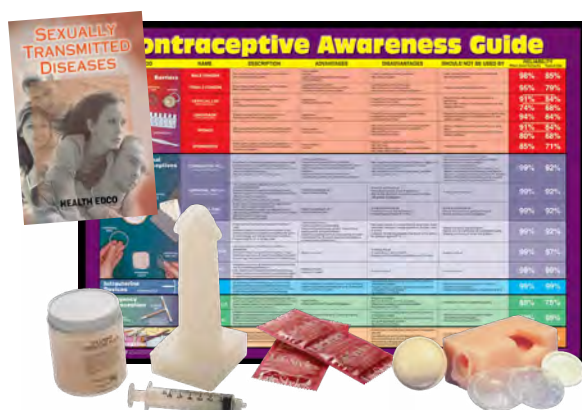


Guide to Contraceptives Kit

Featuring hand-painted, 3-D models, this kit presents a wide variety of contraceptive choices, including the contraceptive sponge, hormonal ring, and hormonal patch.

The guide covers the advantages, disadvantages, and reliability of each contraceptive shown. It also includes two stand-alone panels and an informative, reproducible handout.

79256 Guide to Contraceptives Kit



Contraceptive Education Starter Package

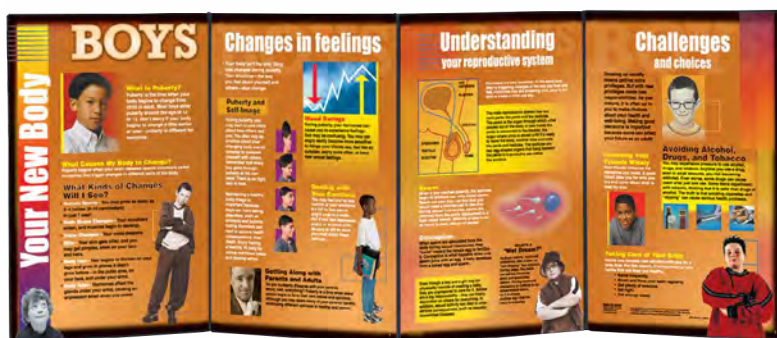
This starter package allows any educator to teach comprehensively about contraceptive usage and options.

The Female Pelvis Contraceptive Model and Economy Condom Training Model are excellent tools for teaching proper contraceptive usage. The colourful and informative Contraceptive Awareness Guide and Sexually Transmitted Diseases booklets allow educators to provide straight-forward facts about the advantages and disadvantages of various methods of contraception.

THE KIT INCLUDES

- Female Contraceptive Model
- Economy Condom Training Model
- Contraceptive Awareness Guide
- Sexually Transmitted Diseases booklet (50)

79375 Contraceptive Education Starter Package



Your New Body: Boys Folding Display

This folding display answers sensitive questions about physical and emotional changes for boys, covering topics such as puberty, reproduction, and good health habits.

Also discusses having a positive self-image and getting along with parents and adults.

Your New Body: Girls Folding Display

This folding display answers sensitive questions about physical and emotional changes for girls, covering topics such as puberty, reproduction, and good health habits.

Also discusses having a positive self-image and getting along with parents and adults.

79328 Your New Body: Boys Folding Display

79329 Your New Body: Girls Folding Display



Male 3D Reproductive System Activity Set

Illustrating the key structures of the male reproductive system, this colourful, 3-D model depicts partially sectioned organs in proper relationship to each other as well as a magnified, sectioned sperm.

Each set includes a comprehensive activity guide that contains teacher-developed activities, colour overhead transparencies, blackline master, and model key.

Years 5-12.

Female 3D Reproductive System Activity Set

Illustrating the key structures of the female reproductive system, this colourful, 3-D model depicts partially sectioned organs in proper relationship to each other as well as a magnified, sectioned ovum.

Each set includes a comprehensive activity guide that contains teacher-developed activities, colour overhead transparencies, blackline master, and model key.

Years 5-12.

54011 Male 3D Reproductive System Activity Set

54012 Female 3D Reproductive System Activity Set



The Consequences of HIV/AIDS 3-D Display

This graphic, 3-D display helps viewers understand just what HIV/AIDS can do to the body. Each realistic, hand painted model depicts one of the major consequences of HIV/AIDS. Ideal for health fairs, schools, and other health education settings. Display is contained within its own sturdy carrying case.

79647 The Consequences of HIV/AIDS 3-D Display



The Consequences of STDs 3D Display

This 3-D display shows how organs and body parts can be affected by sexually transmitted diseases. Each hand painted model is described in easy-to-understand terms. Easy setup makes this display ideal for clinics and sex education programs.

The display is contained within its own portable carrying case.

79634 The Consequences of STDs 3D Display

HIV/AIDS: Death of an Immune System Easel Display

Using simple text and hand painted, 3-D models, this display depicts how HIV attacks T cells. It explains in clear terms how the body's immune system works and how HIV weakens it. The display comes with a wire easel.

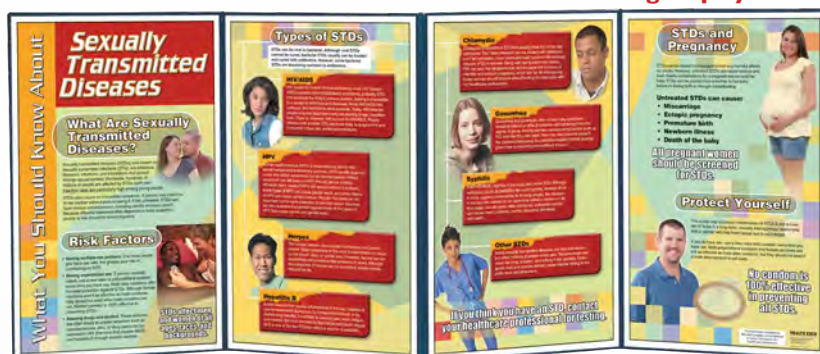
79180 HIV/AIDS: Death of an Immune System Easel Display



What You Should Know About HIV/AIDS Folding Display

This folding display explains how HIV/AIDS affects the immune system and other parts of the body. It also covers transmission, treatments, and how to reduce the risk of infection.

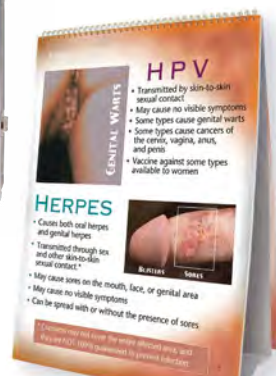
79084 What You Should Know About HIV/AIDS Folding Display



What You Should Know About STDs Folding Display

This educational folding display illustrates the potential aftermath of unsafe sexual practices. Explains the symptoms of various STDs and what happens if they are left untreated, including the consequences for babies born to infected mothers.

79087 What You Should Know About STDs Folding Display



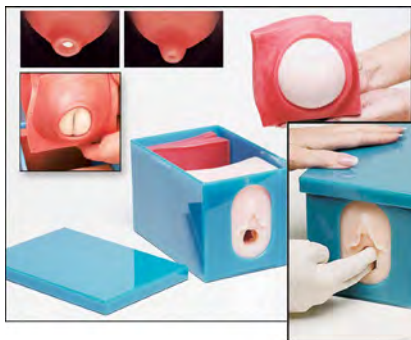
Sexually Transmitted Diseases Flipchart

There's no simple way to talk openly and honestly about sex and its potential consequences. This flip chart presents straightforward facts easing the burden of knowing what to say and how to say it. Covers common STDs, including HIV/AIDS, syphilis, gonorrhea, herpes, hepatitis B, and HPV, and how to avoid them. Six-panel flip chart has presentation notes on the backside of each panel and is 12" x 17".

43162 Sexually Transmitted Diseases Flipchart



Childbirth & Development



Foetal Monitoring and Labour Progress Model Set

Build student confidence with this versatile, 3-D model set that provides realistic simulation for performance of vaginal examinations.

It provides for labour progress, insertion of the intrauterine pressure catheter, assessment of dilatation, palpation of foetal fontanels and suture lines, and assessment of the position of the vertex. The 3-D model includes a foetal head, lower uterine segment, foetal buttocks for breech presentation, and four interchangeable cervical dilatation models. The components fit into durable plastic case that facilitates visualization and easy removal for cleaning. The set comes with lubricant, instructions, and carrying case.

79851 Foetal Monitoring and Labour Progress Model Set

Cervical Dilatation Easel Display

With hand painted, 3-D models, this easel display graphically demonstrates cervical dilatation from 1-8cm. The 1-, 2-, 3-, and 4-cm models allow users to feel the softening and thinning of the cervix. Sets up as a table top display or hangs on a wall.

79738 Cervical Dilatation Easel Display



See Website for prices



With Child Life-size Display

This life-size, standing display with overlapping images shows the childbearing cycle from preconception planning through 6 weeks postpartum.

43319 With Child Life-size Display



With Child Large-size Spiral bound Charts

Covering more than 100 pregnancy topics, this easy-to-use chart collection stimulates class discussion and provides instructors with an overview of essential points for each topic.

This effective learning tool emphasizes that a healthy pregnancy begins by making conscious lifestyle choices before becoming pregnant. Common concerns of mothers and fathers are addressed throughout each stage of pregnancy. 24 pages.

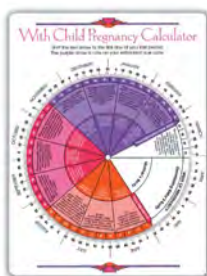
43313 With Child Large-size Spiral bound Charts

With Child Desk Version

This book-size version of With Child illustrates and discusses the childbearing cycle from preconception planning through 6 months postpartum.

Additional topics include seat belt wear during pregnancy, how twins form, and child safety during the first year. Spiral-bound, 91 pages.

43317 With Child Desk Version



With Child Pregnancy Calculator

Help expectant parents calculate their own estimated due date with this movable wheel.

Includes information about key stages of foetal development and essential prenatal care guidelines. A great take-home reminder to help ensure a healthy pregnancy.

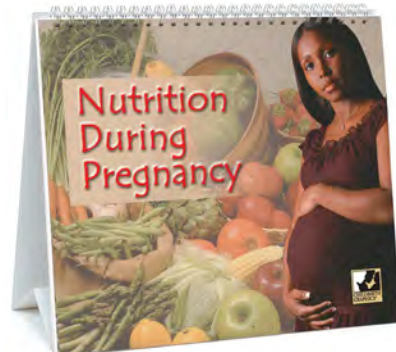
43341 With Child Pregnancy Calculator (I)

Nutrition during Pregnancy Flip Chart

Helping pregnant women learn to eat for two, this flip chart presents the foods and nutrients mothers need to include in their diet.

Emphasizes healthy options, staying away from excess fat, and getting enough fluids. Features presentation notes on reverse panels. 14 panels.

43164 Nutrition during Pregnancy Flip Chart



Birth Companion Booklet

Expectant parents receive instant visual reminders of labor relief methods, including relaxation and massage techniques, and labor and birth positions. Includes 40 color photos. 16 pages.

Minimum order is 25.

38525 Birth Companion Booklet





Vinyl Pelvic Model Set

Fetal Model represents an average-sized, full-term baby. The Perineal Cloth Model can be used to demonstrate the stretching of the perineum, possible episiotomy, and the emergence of the fetal head. Placenta/Cord/Amnion/Chorion Model allows the Fetal Model to be shown inside a simulated amniotic sac.

53954 Vinyl Pelvic Model Set

79814 Foetal Model

79807 Placenta/Cord/Amnion/Chorion Model

79804 Perineal Cloth Model

A61 Female Pelvic Skeleton

Cloth Pelvic Model Set

Made of flexible cloth, this pelvic model shows how different pelvic shapes affect pregnancy, labour, and birth.

It can also be used to demonstrate how the pelvis changes during labour and birth. This set includes the Cloth Pelvic Model, the Foetal Model, the Perineal Cloth, and the Placenta/Cord/Amnion/Chorion Model. The Cloth Pelvic Model measures 24 x 18 x 18cm.

79808 Cloth Pelvic Model (pelvis only)

53955 Cloth Pelvic Model Set



Advanced Child Birth Simulator

With two vinyl fetuses, this simulator can be used to demonstrate cephalic or breech presentation, cesarean section, episiotomy, vertex presentation, and prolapse of the umbilical cord. The full-scale torso made of supple, lifelike vinyl has all major anatomical landmarks with a hand-painted outline of the bony pelvis. Includes female and male fetuses, six umbilical cords, removable diaphragm cover for manual positioning of the fetus, and three ultra-soft vulva inserts for episiotomy procedures. Comes with carrying bag. 20" x 18" x 10"; 18 lb.

54275 Advanced child birth simulator

Shaken Baby Demonstration Model

Just once is all it takes. Just one episode of shaking or inappropriately handling a baby can cause permanent brain damage, blindness, or even death-and it can happen in mere seconds. Use this one-of-a-kind model to perform a sobering demonstration: As the model is shaken, the brain slams violently against the inside of the "skull" just as a real baby's brain would. A 100-sheet Shaken Baby Syndrome tear pad is also available separately.

53501 Shaken Baby Demonstration Model

Mini Model Set

Fit childbirth education in your pocket! Set helps demonstrate what happens during labor and birth. Includes 5 1/2" baby with detachable placenta/cord with amniotic sac, pelvis model, knitted uterus, receiving blanket, and tote bag.

53953 Mini Model Set

Uterus/Foetus Model Set (5)

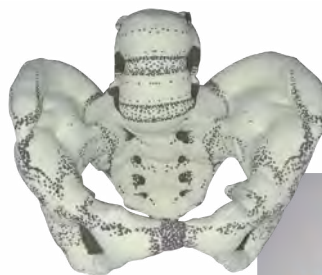
This unique BIOLIKE 2™ model set provides an added dimension to childbirth education classes. These five lifelike uterus/foetus models illustrate foetal development at 8, 10, 16, 22, and 40 weeks. Foetal models can be removed for hands-on instruction.

27007 Uterus/Foetus Model Set (5)

Fetus Models

What's going on in there? Expectant parents are curious about how big their babies are getting at different milestones during pregnancy. These remarkably realistic BIOLIKE 2 fetus models give them a clear picture of the miracle taking place inside the womb at 12, 16, 22, and 30 weeks. Set comes with four models and carrying case.

79867 Fetus models



Childbirth & Development



What To Expect When You're Expecting Book

This classic book provides comprehensive information for expectant parents. Details month-by-month changes in both mother and baby. Also answers hundreds of frequently asked questions about pregnancy, labour, and the postpartum period. 656 pages. ©2008

50902 What To Expect When You're Expecting Book

What to Expect the First Year Book

This book on infant care includes descriptions of child development month by month and answers commonly asked questions. It also includes information on childhood diseases and symptoms. 832 pages. ©2003

50901 What to Expect the First Year Book

Cloth Breast Model

An essential breastfeeding teaching tool, and one that breastfeeding educators rely on. The helpful, detailed model accurately reflects the most current breast anatomy research. Once you use this, you won't want to use anything else to educate lactation and childbirth classes on how the breasts work during breastfeeding. Two beads anchored within the model simulate a plugged duct and breast lump. Also, the foam insert allows the model to look and feel like an engorged breast. Hand-sewn, high quality cloth ensures that you can use the model again and again, while the elastic strap makes it easy to handle. Includes teaching ideas and instructions. Measures 14cm in diameter.

79811 Cloth Breast Model

79812 Cloth Breast Model, Brown



What Goes In Your Body Goes In Your Baby Pamphlet

This pamphlet takes a closer look at how hazardous substances can affect a pregnancy and an unborn child. Examines the risks posed by alcohol, tobacco, over-the-counter and prescription drugs, supplements, toxic chemicals, marijuana, cocaine, amphetamines, methamphetamine, heroin, and inhalants. 8 panels. 10 x 22cm folded. Pack of 50.

38032 What Goes In Your Body Goes In Your Baby Pamphlet (50)

90803 What Goes In Your Body Goes In Your Baby Chart

The Breastfeeding Answer Book

A variety of breastfeeding problems are addressed in this book, enabling a breastfeeding counsellor to tailor suggestions to the individual mother in a host of circumstances. 680 pages. ©2003

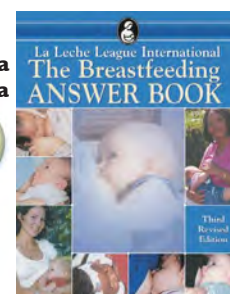
50827 The Breastfeeding Answer Book

Colostrum

Convenient, pocket-sized visual makes it easy to understand the small amount of colostrum a newborn baby needs at each feeding. Use as an effective way to teach the importance of early and often feeding as new moms provide this perfect first nutrition. Real teaspoon filled with simulated colostrum comes with informative plastic key card.



85156 Colostrum



Timeline of Pregnancy Chart

Taken from the popular With Child series, this informative chart illustrates foetal development and uterine growth throughout 40 weeks of pregnancy.

90823 Timeline of Pregnancy Chart



Mama I Want To Be Healthy Pamphlet/Poster

Featuring MyPlate, this colourful, easy-to-read pamphlet folds out into a poster. It reminds expectant mothers to eat well, get regular prenatal care, and avoid pregnancy hazards. It also lists symptoms that should be reported to a healthcare professional immediately.

38521 Mama I Want To Be Healthy Pamphlet/Poster



Baby Bellies

Help breastfeeding mothers understand their newborns' nutritional needs. Handy key chain fits easily in your pocket and features three models that represent the small amounts of breastmilk newborns need per feeding on the first, third, and tenth days of life. The color of each model represents a breastfed baby's healthy stool color on the corresponding day. Includes informative laminated plastic key card.

53526 Baby Bellies



Prenatal Development

Available in paper, soft and rigid lamination.

PRENP Prenatal Development (P)
PRENSL Prenatal Development (SL)
PRENL Prenatal Development (L)

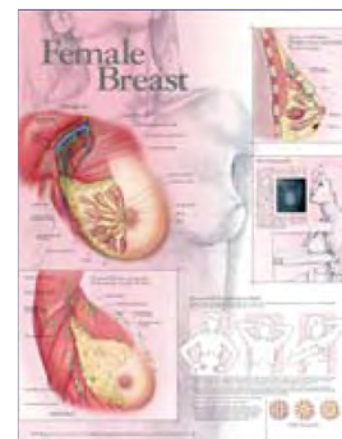


With Child Simulator

The With Child™ Pregnancy Simulator offers a convenient way for non-pregnant wearers to experience the many inconveniences of being pregnant.

Wearing the With Child™ Simulator develops empathy for the unique physical challenges of being pregnant—excellent for expectant fathers in childbirth education classes or teens in pregnancy prevention programs. Users understand the physical symptoms of being pregnant while wearing the pregnancy simulator to perform simple tasks. Even just walking a few steps or sitting down can result in discomfort!

54427 With Child Simulator



Breast Care Folding Display

Colourful and informative, this folding display describes benign and cancerous conditions of the breast.

Discusses risk factors and warning signs of breast cancer as well as BSE patterns and mammography.

79308 Breast Care Folding Display

Breast Care Booklet

This educational booklet explains the facts about breast cancer. It teaches the importance of combining BSE, mammography, and an annual clinical exam for the best defence against breast cancer. 16 pages, Pack of 50.

40001 Breast Care Booklet (50)

The Female Breast

Available in paper, soft and rigid lamination.

FEMAP The Female Breast (P)

FEMASL The Female Breast (SL)

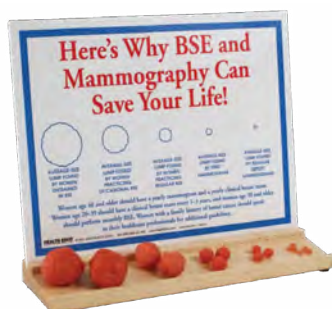
FEMAL The Female Breast (L)



Interactive Breast Lump Display

The need for proactive breast care is clearly demonstrated by comparing the simulated lumps in this display. The display shows the average size at which breast lumps are first discovered by an untrained BSE, by occasional BSE, by regular BSE, by a first mammogram, and by regular mammography.

26803 Interactive Breast Lump Display



Pap Tests Easel Display

Easy-to-understand text combined with six hand painted, realistic cervix models make teaching the importance of regular Pap tests easy. This 3-D display is perfect for one-on-one presentations.

79733 Pap Tests Easel Display

Cervix Display

Five lifelike models made from soft BIOLIKE 2™ show progressive changes in the cervix from its normal condition through the development of later-stage cancer. These models provide a unique, tactile learning experience. Measures 28 x 21 cm.

26805 Cervix Display



Breast Cross-section

This full sized cross section of a breast depicts common pathologies such as adenocarcinoma, cysts, fibroadenoma, and infiltrating scirrhous carcinoma. The model also shows breast structures such as suspensory ligaments, fat tissue, lymph nodes, muscles, and ribs.

• Model size: 16 x 11 x 8cm

• Card size: 21 x 16cm

GPA3450 Breast Cross-section



Women's Health

Composite Female Pelvis and Pelvic Floor Model

Complete and life-size female pelvis model is made of synthetic bonelike material. Highly detailed pelvic floor is made of flexible material and can be dissected. Genitalia and associated muscles are featured. Separates into five parts. 11 1/2" x 8 1/2" x 8 1/2".

53504 Composite Female Pelvis and Pelvic Floor Model



Fibrocystic BSE Model

Benign cysts are often mistaken for malignant tumours. This model contains multiple lumps, simulating a fibrocystic condition. Comes complete with slipcover and carrying case.

26505E Fibrocystic BSE Model, Beige



How to Perform Breast Self-Examination (BSE) Chart

With helpful photographs and clear text, this useful chart illustrates each step of breast self-examination. It explains the basic procedures for vertical/grid, circular, and wedge patterns and includes recommendations on when and where to perform a BSE. It also lists the possible warning signs of breast cancer and is an excellent teaching resource.

90064 How to Perform Breast Self-Examination (BSE) Chart



Lymph Node Model

With three enlarged nodes, this BIOLIKE 2™ model helps teach patients how to check the axillary lymph node region under their arms. Comes complete with carrying case.

26575 Lymph Node Model, Beige

Breast Cancer

This full sized model is made of a durable lifelike material with embedded lumps that simulate Fibrocystic Mass and a typical tumour.

This model also contains a Lactiferous duct and the back side of the education card shows the 4 stages of breast cancer. The base art shows common self-inspection patterns.

- Model Size: 22 x 16 x 8cm
- Card Size: 21 x 16cm

GPA340I Breast Cancer



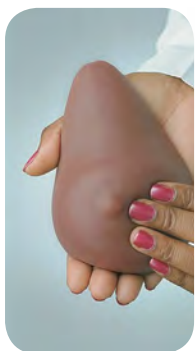
Multi-Type BSE Model

Featuring breast models that can be picked up and examined, this display highlights the importance of breast self-examination, mammography, and clinical breast exams.

This model aids in the detection of breast cancer and other breast conditions. The model includes a breast without lumps, a breast with fibrocystic tissue, and a breast with lumps.

26426 Multi-Type BSE Model

26427 Multi-Type BSE Model, Brown



Group BSE Model

One breast in this model contains five palpable lumps, and the other breast, for comparison, has none. The model's size makes it ideal for group demonstration and is mounted on a collapsible easel.

26547 Group BSE Model

26548 Group BSE Model, Brown



Standard BSE Model

This popular breast model contains palpable and nonpalpable lumps that simulate easy and hard-to-find breast tumours. The model feels like actual breast tissue and comes with a slipcover and carrying case. Also includes a penlight to illuminate nonpalpable lumps.

26500 Standard BSE Model, Beige

26503 Standard BSE Model, Brown



Standard BSE Model Kit

This kit includes beige and brown breast models with palpable and nonpalpable lumps that simulate easy and hard-to-find breast tumours.

These models feel like actual breast tissue and include protective slipcovers, booklet, carrying case, and a penlight to illuminate nonpalpable lumps.

26550 Standard BSE Model Kit



Interchangeable Nodules BSE Model

This model adds realism to BSE instruction and contains five different-sized lumps that can be inserted and removed from the back.

Comes complete with a slipcover, carrying case, and an extra set of nodules.

26504 Interchangeable Nodules BSE Model



Heavy Duty BSE Model

This BSE model has been designed for high-volume use. The model has palpable lumps and is contained within a durable slipcover. Comes complete with a carrying case.

26502 Heavy Duty BSE Model, Beige

26502E Heavy Duty BSE Model, Brown



ABC Cup BSE Model Set

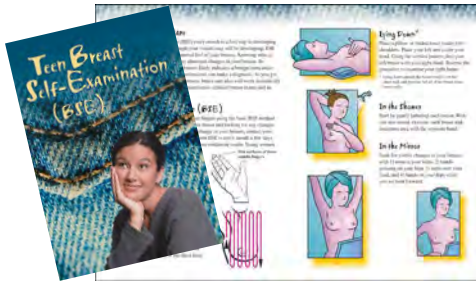
This set consists of three breast models that approximate A, B, and C cup sizes. Each breast model contains palpable and nonpalpable lumps, allowing BSE instruction to be tailored to a variety of women. This set also includes slipcovers and a carrying case.

26540 ABC Cup BSE Model Set, Beige

26540E ABC Cup BSE Model Set, Brown



Women's / Men's Health



Teen BSE Model

Teaching teens the importance of BSE in detecting breast cancer is easy with this model designed specifically for them.

Made of soft BIOLIKE 2™ synthetic tissue, the model contains lumps in a variety of sizes. Comes complete with slipcover and carrying case.

26528 Teen BSE Model, Beige
26528E Teen BSE Model, Brown

Teen BSE Booklet

Teens need to understand why monthly breast self-examination (BSE) is an important tool in the fight against breast cancer. This pamphlet teaches them how to perform BSE accurately, provides breast care facts, and explains abnormal changes teens should look for in an exam. 4 panels. 11 x 16cm folded. Pack of 50.

38066 Teen BSE Booklet (50)

Mini-Breast Model

This model encourages mammography and BSE by simulating two different types of breast lumps: one that can be felt and one that cannot. These Mini-Breast Models are boxed individually, measuring 4 x 6cm.

26903 Mini-Breast Model
26903E Mini-Breast Model, Brown



Teen BSE/TSE Model Kit

This kit contains a teen BSE model and a TSE model to teach teens the importance of the early detection of cancer.

The teen BSE model contains lumps in a variety of sizes and the TSE model contains two lumps in each testicle. Each model is made of soft, durable BIOLIKE 2™ synthetic tissue and comes with slipcover and carrying case.

26495 Teen BSE/TSE Model Kit, Beige
26496 Teen BSE/TSE Model Kit, Brown

BSE/TSE Shower Card

Printed on front and back, this shower card addresses the self-examination needs of women and men. Pack of 50.

23022 BSE/TSE Shower Card (50)



Male Pelvis with Testicle

Half scale, mid-sagittal section of a male pelvis showing the anatomy of the pelvis and testis.

The base includes a testicle with cancer, depicting a seminoma tumour, one of the two most common tumours. The double-sided education card features the male pelvis on one side and three stages of testis tumours on the reverse.

- Model size: 18 x 3 x 12cm
- Card size: 16 x 13cm

GPA3570 Male Pelvis with Testicle



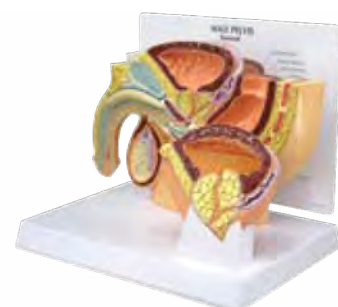
Male Pelvis with 3D Prostate

Reduced size, mid sagittal section of the male pelvis.

The base displays three 3-dimensional crosssections of the prostate gland. The sections represent stages (normal, moderate, advanced) of BPH (Benign Prostatic Hyperplasia/Enlarged Prostate).

- Model Size: 18 x 3 x 12cm
- Card Size: 16 x 13cm

GPA3551 Male Pelvis w 3D Prostate



Male Pelvis with BPH

Near full sized, this mid-sagittal section shows the anatomy of the pelvis and prostate. It includes both normal and benign prostatic hyperplasia (BPH) inserts. The BPH insert shows the increased size of the prostate, urethral obstruction, urine retention, and the thickening and distension of the bladder.

- Model size: 23 x 4 x 16cm
- Card size: 21 x 16cm

GPA3552 Male Pelvis with BPH



Mini-Testicles Model

This model simulates the feel of a scrotum and testicles containing two lumps, one in each testicle. Made of BIOLIKE 2™, these Mini-Testicle Models are individually boxed.

26935 Mini-Testicles Model, Beige
26936 Mini-Testicles Model, Brown



TSE Model, Two Lumps in Each

Made from a soft BIOLIKE 2™ synthetic tissue, this life-size model of the male testicles contains palpable lumps. This model contains two lumps in each testicle. These models are perfect for teaching Testicular Self Examination.

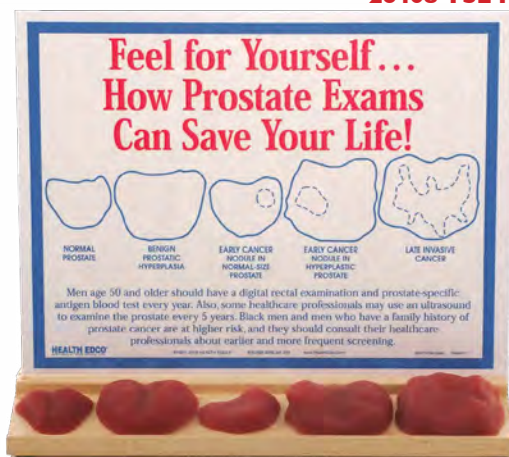
26400 TSE Model, Two Lumps in Each, Beige
26400E TSE Model, Two Lumps in Each, Brown



TSE Model, Two Lumps in One

Made from a soft BIOLIKE 2™ synthetic tissue, this life-size model of the male testicles contains palpable lumps. This model contains two lumps in one testicle and none in the other. These models are perfect for teaching Testicular Self Examination.

26406 TSE Model, Two Lumps in One, Beige
26406E TSE Model, Two Lumps in One, Brown
26408 TSE Model, Two Lumps in Each, Translucent



Prostate Exams Display

By comparing these lifelike specimens, men can understand why routine prostate exams are important for prostate care and early cancer detection. Features five BIOLIKE 2™ models of normal, benign, and cancerous prostates.

26807 Prostate Exams Display



Facts about Testicular and Prostate Cancer Folding Display

This folding display explores testicular and prostate cancer by identifying the risk factors, symptoms, and treatment of each condition. Emphasizes the importance of testicular self-examination and prostate cancer screening. Measures 147 x 57cm opened.

79018 Facts about Testicular and Prostate Cancer



Prostate Exams Easel Display

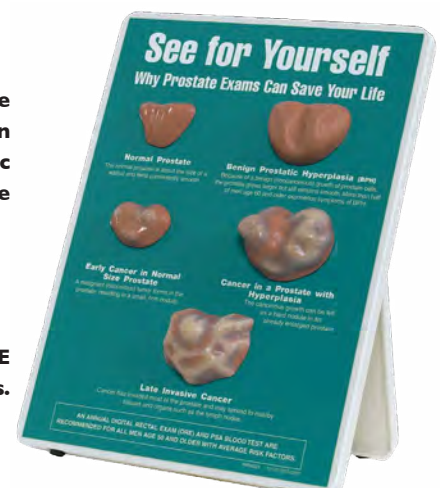
Hand painted to simulate the appearance of actual tissue, these five 3-D prostate models represent a normal prostate, benign prostatic hyperplasia, early cancer, cancer in a hyperplastic prostate, and late invasive cancer. Graphically emphasizes the need for regular prostate exams.

79737 Prostate Exams Easel Display

Mini-Testicles Shower Card

Designed to hang on a shower fixture, this card includes TSE instructions and a BIOLIKE 2™ Mini-Testicle Model with lumps. Pack of 50.

23008 Mini-Testicles Shower Card, Beige (50)
23009 Mini-Testicles Shower Card, Brown (50)



Training Models

Injection Teaching Model

This BIOLIKE 2™ teaching model allows users to practice intradermal, subcutaneous, and intramuscular injections. Can be punctured repeatedly without showing holes. Injecting liquids into this model is not recommended.

26200 Injection Teaching Model



Injection Training Hand Model

A common site for venipuncture is the back of the hand. Teaching IV drip procedure is made easy with this realistic BIOLIKE 2™ hand model. Comes complete with powder.

26240 Injection Training Hand Model



Male Catheter Model

Students can practice inserting a lubricated catheter through a collapsible external urethra meatus into the bladder, this BIOLIKE 2™ model has a viscoelastic urethra. Lubricant included. Catheter not included.

Female Catheter Model

Allowing students to locate the urethra easily and pass a lubricated catheter through it into the bladder, this BIOLIKE 2™ model has a spread vulva and a viscoelastic urethra. Lubricant included. Catheter not included.

Catheter Model Set

Students can practice the insertion of a catheters through a collapsible external urethra meatus into the bladder with these realistic male and female models. Each BIOLIKE 2™ model has a viscoelastic urethra. Lubricant included. Catheter not included. Each model comes with a carrying case.

26104 Male Catheter Model

26108 Female Catheter Model

26109 Catheter Model Set

Ostomy Care Model

Made of lifelike BIOLIKE 2™, this life-size model contains four stomas that can be lubricated and dilated with an inserted finger. The model may be washed, taped, bandaged, and fitted with ostomy bags. Comes with lubricant, draping sheet.

26130 Ostomy Care Model



Bedsore Cleansing and Dressing Model

The varying stages of pressure sores on this unique model can be washed, treated with antiseptics or most medicines, then dressed just like real flesh. Made from BIOLIKE 2™ synthetic tissue the model comes with a carrying case and draping sheet.

26828 Bedsore Cleansing and Dressing Model

Diabetic Foot Model

This life-size, BIOLIKE 2™ replica is great for both education and patient training. The original Diabetic Foot Model represents a foot with three ulcers in various stages of development as well as other features commonly associated with diabetes. Comes with carrying case and instruction card.

Severe Diabetic Foot Model

This life-size, BIOLIKE 2™ replica complements the original Diabetic Foot Model. It shows additional, more severe consequences of diabetes, including an amputated toe, Charcot foot deformity, and severe infection and gangrene. Comes with carrying case and instruction card.

Diabetic Foot Model Set

Contains the Diabetic Foot Model and the Severe Diabetic Foot Model. Each model comes with a carrying case and is approximately 9 x 23 x 11 cm.

26101 Diabetic Foot Model

26150 Severe Diabetic Foot Model

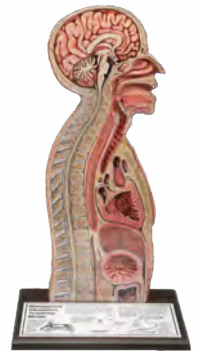
26160 Diabetic Foot Model Set



Nasogastric Intubation Model

A 3cm deep model cast of the nose, mouth, pharynx, trachea, oesophagus, and stomach makes this model ideal for demonstrating the common hospital procedure of inserting a feeding tube. Plastic feeding tubes or catheters may be passed through the nose or mouth into the oesophagus or stomach. The model also features a tracheostoma for endotracheal aspiration. Clear Plexiglas lets viewers easily observe the procedures.

84087 Nasogastric Intubation Model



Abdominal Palpation Model

Used to perform Leopold's maneuvers and practice palpation skills that determine fetal lie presentation and position. Also includes a pelvis and weighted fetus with movable arms and legs, firm buttocks, and a head with palpable fontanelles.

79820 Abdominal Palpation Model



Physical Activity / Obesity

Obesity Education Package

- Overweight & Obesity folding display
- Healthy Eating Out booklet (50 included)
- Visualize Your Portion Size display
- 25 Ways to Cut at Least 100 Calories chart
- A four-part facilitator's guide contains a presentation script worksheets quizzes and enrichment activities

79952 Obesity Education Package

Fat Chunks And Mighty Muscle Set

At odds for years, our Mighty Muscles and Fat Chunks convene for a spirited debate. The sleek-shaped muscles quickly remind everyone that their "chunky" counterparts take up twice the space even though they weigh the same. In response, the Fat Chunks make a weak pitch for a life of Twinkies and television muttering that muscle is just too "dense" to understand. Set comes with tent cards and carrying cases.

26025 Fat Chunks And Mighty Muscle Set

Fat And Muscle Set (1lb and 5 lb)

Award Winner!

GLOBS OF FAT Allows up-close and personal view at how fat looks and feels. **MASSSES OF MUSCLE** Observe how even at rest muscles remain dense and strong.

26040 Fat And Muscle Set (1lb and 5 lb)



Exercise Facts Folding Display

A combination of colourful art and clear explanations about the advantages of aerobic exercise and strength training make this folding display an ideal teaching tool. Also included are ways to work exercise into daily life, a discussion of exercise benefits for all ages, and information on exercise safety. Measures 74 x 51cm opened.

79293 Exercise Facts Folding Display



Overweight and Obesity Folding Display

This eye-catching folding display defines overweight and obesity and examines common causes, treatment options, and health risks associated with these conditions. The accompanying tent card explains how to determine and classify body mass index (BMI). Also comes with one Body Mass Index tear pad. Measures 147 x 57cm opened.

79319 Overweight and Obesity Folding Display



Consequences of an Inactive Lifestyle 3D Display

This 3-D display graphically shows many of the negative health consequences of an inactive lifestyle. Each permanently mounted, hand painted model has a brief description of the consequences it represents. The display is contained within its own sturdy carrying case. Measures 71 x 68cm opened.

79621 Consequences of an Inactive Lifestyle 3D Display



Escapades Game

With more than 300 indoor and outdoor games, Escapades is full of imaginative ideas for physical education classes, retreats, school parties, and more. Cards are divided into three energy level categories: low, medium, and high. For 2 or more players. PreK-Adult.

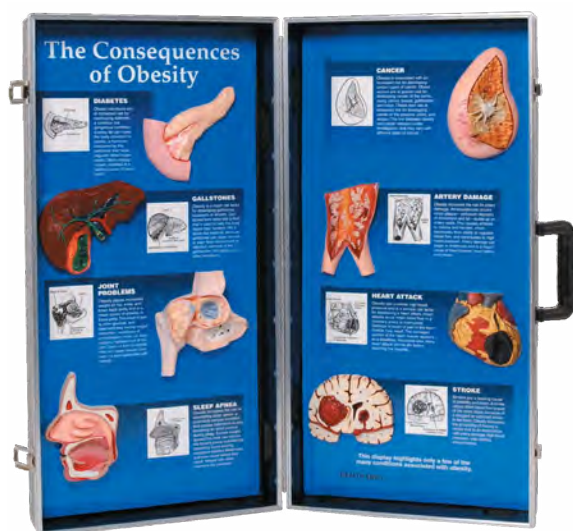
79839 Escapades Game

Fat Vest Adult Size

People who wear this weighted vest will excitedly recount the experience afterward-just as soon as they catch their breath. Simulating the "look" and "feel" of excess body fat the vest also creates the fatiguing restrictive feeling associated with obesity. By inserting five weights into the adult vest's interior pocket, the user can "gain" up to 20 extra pounds.

26003 Fat Vest Adult Size



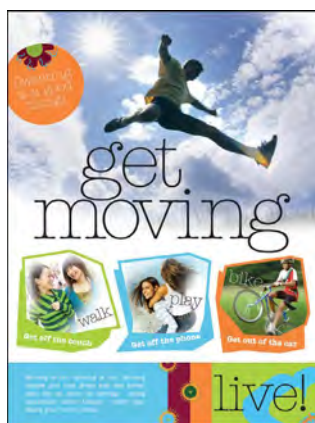
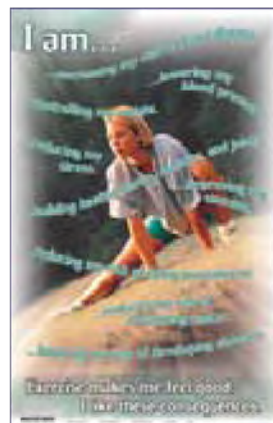


The Consequences of Obesity 3-D Display

This 3-D display uses hand painted models to explain the dangers of obesity.

Models are permanently mounted and accompanied by text that clearly describes each condition. Ideal for health fairs, clinics, or any nutrition education event. Display is contained within its own durable carrying case.

79645 The Consequences of Obesity 3-D Display



Obesity Model

This model shows Pear and Apple shaped bodies in two crosssections (one left, one right) of the hip area. These models illustrate the effects of obesity such as compression from visceral fat on the colon, common iliac artery and veins, ureter, small intestine, femoral nerve, etc.

• Model Size: Pear: 10 x 14 x 9cm • Apple: 9 x 15 x 9cm

• Card Size: 16 x 21cm

GPA3600 Obesity Model



Fitness Dice

These two jumbo dice help make exercise fun and exciting. One die features exercises such as push-ups, jumping jacks, and leg lifts, while the other die has even numbers ranging from 2 to 12. With each roll, participants perform the activity shown on the first die the number of times shown on the second die. Colours may vary.

79025 Fitness Dice



10-Sided Fitness Dice

Made of a durable latex rubber, these fitness dice offer a touch of variety to any fitness program. One die contains exercises such as toe touch, bicycle, arm circle, and sit-up, while the other die has even numbers to indicate the number of repetitions.

79049 10-Sided Fitness Dice



Exercise Clever Catch Ball

This colourful, inflatable ball has 98 questions relating to health and fitness printed on its surface. It comes with an answer sheet and instructions. Years 6-9,

79680 Exercise Clever Catch Ball



Get Moving Poster

Featuring teens in action, this energizing poster motivates young people to be physically active every day.

90873 Get Moving Poster



Keys to Healthy Eating

Available in paper, soft and rigid lamination. Measures 51 x 66cm.

KEYSP Keys to Healthy Eating (P)

KEYSSL Keys to Healthy Eating (SL)

KEYSL Keys to Healthy Eating (L)

Risks of Obesity

Available in paper, soft and rigid lamination. Measures 51 x 66cm.

FEMAP Risks of Obesity(P)

FEMASL Risks of Obesity(SL)

FEMAL Risks of Obesity(P)



Heart Health



Occluded Artery Model

The potentially deadly effects of high cholesterol are demonstrated with this persuasive model. The tube represents an artery constricted by plaque, which forms on artery walls when there is excess cholesterol in the blood. When the model is turned over, the blood in the artery slows or stops completely. An excellent tool for explaining the importance of keeping cholesterol under control.

79145 Occluded Artery Model



Deluxe Occluded Artery Model

Demonstrating the benefits of a healthy cholesterol level and the deadly effects of high cholesterol, this model will leave an impression that lectures and textbooks cannot. The model's two tubes represent a normal artery and an artery constricted by plaque. When the model is turned over, the blood in the healthy artery flows swiftly to the top, but the blood in the occluded artery slows and even stops completely.

79153 Deluxe Occluded Artery Model

Death of an Artery Easel Display

These hand painted, cross-sectional, 3-D models of arteries show patients and students the various stages of plaque buildup. The interior size of each vessel diminishes, making it easy to explain a process that can eventually result in death.

79149 Death of an Artery Easel Display



Clogged Artery Model

This unique model vividly demonstrates what happens inside a clogged artery. The inside passage of this artery, made of BIOLIKE 2™ synthetic tissue, is everely constricted by layers of plaque.

26526 Clogged Artery Model

Cholesterol Flip Chart

Many people do not know what steps they can take to maintain healthy cholesterol levels.

This flip chart explains the facts about “good” and “bad” cholesterol and the health risks associated with high cholesterol levels. The flip chart features presenter's notes on the reverse panels. 6 panels.

43117 Cholesterol Flip Chart



Mini Heart Set

This three model set contrasts a normal heart with ones showing Myocardial Infarction and Congestive Heart Failure. The myocardial infarction heart demonstrates a partially healed, thinned, and discoloured infarcted area, including a thrombus in the apex of the heart. The remaining heart demonstrates congestive heart failure as a result of hypertension. The left ventricle hypertrophy and the correspondingly enlarged and distorted shape of the heart are shown both internally and externally. All models are approximately 50% actual size and the set comes with a descriptive card.

• Model sizes: Normal & MI 10 x 6 x 4cm, CHF 10 x 6 x 6cm • Card size: 21 x 16cm

GPA2550 Mini Heart Set

4 Piece Artery

4-stage cross section of an artery demonstrating atherosclerosis, in which the narrowing of the artery is due to a build-up of fatty tissue (cholesterol) and plaque. The 4-stages consist of • normal artery • fatty streak • fibrous plaque, and • blockage. The stages cause a decrease in blood flow, which can then lead to a blood clot or thrombus. All stages rotate on a hinge pin.

• Model size: (4) 3cm dia x 2cm (8cm) • Card size: 16 x 13cm

GPA2650 4 Piece Artery





Blood Pressure Checks Easel Display

Patients and students learn the importance of blood pressure checks when they see these hand painted, 3-D models of arteries and this cross section of the brain. Demonstrates the way high blood pressure can silently lead to heart attacks or strokes.

79736 Blood Pressure Checks Easel Display



See Website for prices

High Blood Pressure Flip Chart

High blood pressure can be controlled through diet, exercise, lifestyle changes, and prescribed medication. This flip chart explains risk factors associated with high blood pressure and discuss strategies for preventing and controlling it. The flip chart features presenter's notes on the reverse panels. 6 panels.

43116 High Blood Pressure Flip Chart

What You Should Know about High Blood Pressure Folding Display

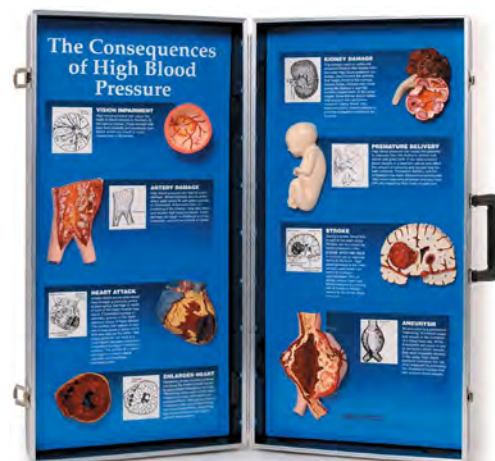
This display describes the symptoms of high blood pressure, explains its causes, and discusses methods of controlling blood pressure.

79285 What You Should Know about High Blood Pressure Folding Display

The Consequences of High Blood Pressure

Need to give people a compelling reason to avoid high blood pressure? Better yet give them eight reasons. From bursting arteries to blindness, this display is a real chamber of horrors illustrating the critical importance of managing blood pressure correctly. Easily transported in a self-contained carrying case. 28" x 27" opened.

79649 The Consequences of High Blood Pressure



Hypertension Model Set

Hypertension Model Set

This set contains miniatures of the half brain, eye, heart, kidney and artery models.

The normal right-side half brain features the frontal, parietal, occipital and temporal lobes.

The eye model has been sectioned to show the inner anatomy of the eye.

The two-piece normal heart model opens in half to show the inner chambers and valves of the heart.

The kidney shows a longitudinal section of the right kidney and adrenal gland.

An oversized "Y" section of an artery, complete with cut-away, showing the gradual build-up of cholesterol deposits. The education card illustrates the effects associated with hypertension: glaucoma, artherosclerosis, arterial plaque, kidney failure and stroke

GPA4000 Hypertension Model Set

Diabetes



Diabetic Injection Model Kit, Beige

Made from realistic BIOLIKE™ material, these teaching models facilitate technique practice on both an injection “skin” and a finger stick apparatus. The skin model may be strapped to the user’s arm or leg to simulate a needle injection site, and the finger stick model may be held for lancet practice. Both can be punctured repeatedly. Replacement skin for the skin model and replacement finger are also available. Comes with powder and carrying case.

26102 Diabetic Injection Model Kit, Beige

26229 Diabetic Injection Model Rep. Skin and Finger

Effects of Diabetes Display

Giving head-to-toe coverage of a growing health problem, this display highlights eight areas commonly affected by diabetes. It includes detailed replicas of a heart, kidney, brain, eye, lower set of teeth, foot, artery, and nerves.

78792 Effects of Diabetes Display



A1C Levels

Capture viewers’ undivided attention with this clever divided model. One half represents a healthy blood sugar and A1C level by depicting a small number of glucose particles and a red blood cell model that has few glucose particles attached to it. In contrast, the model’s other red blood cell is “swarmed” by excess glucose particles as it floats through simulated plasma, representing a high blood sugar and A1C level. Model is 11½” x 2½”. Includes informative, bilingual English/Spanish tear pad. 100 sheets per pad.

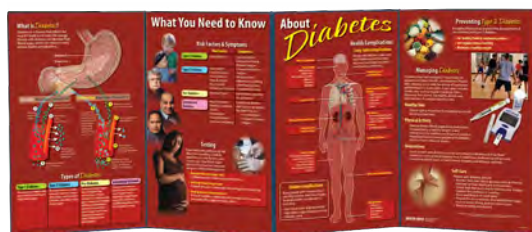


75485 A1C Levels

Type II Diabetes Model Set

There isn’t a single part of the body that is immune from the devastating effects of unmanaged diabetes. This cleverly designed display features models of the brain, eye, heart and artery, kidney, pancreas, neuron, and foot creating a great visual for explaining the effects of type 2 diabetes. Key card discusses related conditions such as stroke, heart disease, and foot ulcerations. 8 1/2” x 10” x 6 1/2”.

54168 Type II Diabetes Model Set



What You Need To Know About Diabetes Folding Display

With information about risk factors, symptoms, and complications of diabetes, this folding display is a valuable resource for health educators. It explains the different types of diabetes and describes how the disease can be treated. Measures 147 x 57cm opened.

79302 What You Need To Know About Diabetes Folding Display



Diabetes Flip Chart

This flip chart explains type 1, type 2, and gestational diabetes as well as the risk factors and warning signs of each one. Information on prediabetes, testing, complications resulting from diabetes, and managing diabetes is also included. The flip chart features presenter’s notes on reverse panels. 6 panels.

43130 Diabetes Flip Chart

Nutrition Toss Up Ball

Learning about nutrition can be fun with this inflatable ball, which is covered with pictures of 35 different foods. It can be used to help users identify foods and food groups and learn what certain foods contribute to the diet. Comes complete with instructions for different activities and an answer sheet. Year 6-Adult.

79024 Nutrition Toss Up Ball



The Consequences of Diabetes 3D Display

Hand painted, 3-D models and straight forward text explain the negative effects diabetes can have on the body. This is a great tool for promoting awareness of this potentially devastating disease. The display is contained within its own sturdy carrying case.

79620 The Consequences of Diabetes 3D Display

A Day’s Worth of Fat

Containing simulated blood and fat, this heart-shaped bottle shows the approximate amount of fat a person consumes in a day. Based on a diet of 2,200 calories with 40% of calories from fat. This model creates an awareness of the dangers of a high-fat diet.

79728 A Day’s Worth of Fat





www.mentone-educational.com.au

PO Box 2 Sandown Village Vic 3171 • Fax: (03) 9548 1537 • Phone: (03) 9547 6638 • ABN/ACN • Printed in China